

### Product Information

**Size:**

50ul

**Reactivity:**

Human, Mouse

**Source:**

Rabbit

**Isotype:**

IgG

**Applications:**

ELISA, IHC

**Recommended dilutions:**

ELISA:1:1000-1:5000, IHC:1:25-1:100

**Protein Background:**

The protein encoded by this gene is a membrane-bound receptor and member of the melanocortin receptor family. The encoded protein interacts with adrenocorticotrophic and MSH hormones and is mediated by G proteins. This is an intronless gene. Defects in this gene are a cause of autosomal dominant obesity.

**Gene ID:**

MC4R

**Uniprot**

P32245

**Synonyms:**

Melanocortin 4 receptor

**Immunogen:**

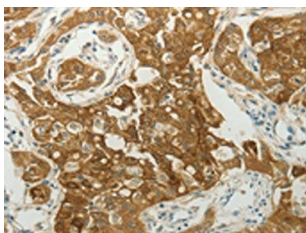
Synthetic peptide of human MC4R.

**Storage:**

-20&deg; C, pH7.4 PBS, 0.05% NaN<sub>3</sub>, 40% Glycerol

## Product Images

---



The image on the left is immunohistochemistry of paraffin-embedded Human lung cancer tissue using PACO18197(MC4R Antibody) at dilution 1/30, on the right is treated with synthetic peptide. (Original magnification: x—200).