

SLC16A14 Antibody



PACO18202

Product Information

Size:

50ul

Reactivity:

Human

Source:

Rabbit

Isotype:

IgG

Applications:

ELISA, IHC

Recommended dilutions:

ELISA:1:2000-1:5000, IHC:1:100-1:300

Protein Background:

Proton-linked monocarboxylate transporter. Catalyzes the rapid transport across the plasma membrane of many monocarboxylates.

Gene ID:

SLC16A14

Uniprot

Q7RTX9

Synonyms:

solute carrier family 16, member 14 (monocarboxylic acid, transporter 14)

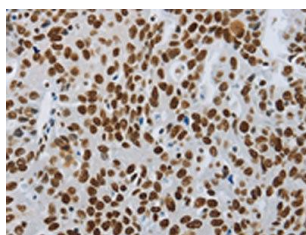
Immunogen:

Synthetic peptide of human SLC16A14.

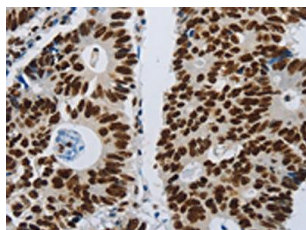
Storage:

-20° C, pH7.4 PBS, 0.05% NaN₃, 40% Glycerol

Product Images



The image on the left is immunohistochemistry of paraffin-embedded Human ovarian cancer tissue using PACO18202(SLC16A14 Antibody) at dilution 1/80, on the right is treated with synthetic peptide. (Original magnification: x—200).



The image on the left is immunohistochemistry of paraffin-embedded Human colon cancer tissue using PACO18202(SLC16A14 Antibody) at dilution 1/80, on the right is treated with synthetic peptide. (Original magnification: x—200).