

PACO18216

Product Information

Size:

50ul

Reactivity:

Human, Mouse

Source:

Rabbit

Isotype:

IgG

Applications:

ELISA, WB, IHC

Recommended dilutions:

ELISA:1:1000-1:2000, WB:1:200-1:1000,
IHC:1:25-1:100

Protein Background:

This gene encodes a member of the bestrophin gene family. This small gene family is characterized by proteins with a highly conserved N-terminus with four to six transmembrane domains. Bestrophins may form chloride ion channels or may regulate voltage-gated L-type calcium-ion channels. Bestrophins are generally believed to form calcium-activated chloride-ion channels in epithelial cells but they have also been shown to be highly permeable to bicarbonate ion transport in retinal tissue. Mutations in this gene are responsible for juvenile-onset vitelliform macular dystrophy (VMD2), also known as Best macular dystrophy, in addition to adult-onset vitelliform macular dystrophy (AVMD) and other retinopathies. Alternative splicing results in multiple variants encoding distinct isoforms.

Gene ID:

BEST1

Uniprot

O76090

Synonyms:

bestrophin 1

Immunogen:

Synthetic peptide of human BEST1.

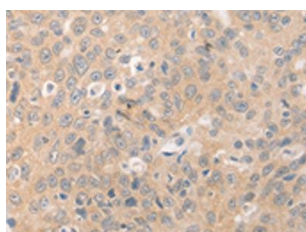
Storage:

-20° C, pH7.4 PBS, 0.05% NaN₃, 40% Glycerol

Product Images



Gel: 10%SDS-PAGE, Lysate: 40 μ g, Lane: Mouse eyes tissue, Primary antibody: PACO18216(BEST1 Antibody) at dilution 1/300, Secondary antibody: Goat anti rabbit IgG at 1/8000 dilution, Exposure time: 2 minutes.



The image on the left is immunohistochemistry of paraffin-embedded Human ovarian cancer tissue using PACO18216(BEST1 Antibody) at dilution 1/20, on the right is treated with synthetic peptide. (Original magnification: x—200).