

### Product Information

**Size:**

50ul

**Reactivity:**

Human, Mouse, Rat

**Source:**

Rabbit

**Isotype:**

IgG

**Applications:**

ELISA, WB, IHC

**Recommended dilutions:**

ELISA:1:2000-1:10000, WB:1:1000-1:5000,  
IHC:1:50-1:200

**Protein Background:**

Myosin, a structural component of muscle, consists of two heavy chains and four light chains. The protein encoded by this gene is a myosin light chain that may regulate muscle contraction by modulating the ATPase activity of myosin heads. The encoded protein binds calcium and is activated by myosin light chain kinase. Two transcript variants encoding different isoforms have been found for this gene.

**Gene ID:**

MYL9

**Uniprot**

P24844

**Synonyms:**

myosin, light chain 9, regulatory

**Immunogen:**

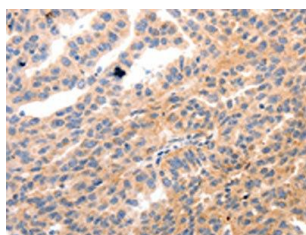
Synthetic peptide of human MYL9.

**Storage:**

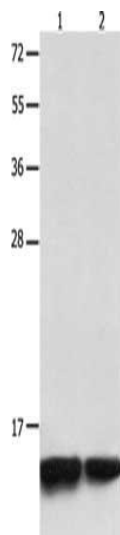
-20&deg; C, pH7.4 PBS, 0.05% NaN<sub>3</sub>, 40% Glycerol

## Product Images

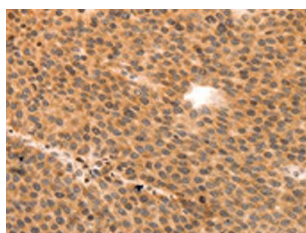
---



The image on the left is immunohistochemistry of paraffin-embedded Human ovarian cancer tissue using PACO18257(MYL9 Antibody) at dilution 1/80, on the right is treated with synthetic peptide. (Original magnification: x—200).



Gel: 12%SDS-PAGE, Lysate: 40 &mu; g, Lane 1-2: Jurkat cells, 231 cells, Primary antibody: PACO18257(MYL9 Antibody) at dilution 1/1500, Secondary antibody: Goat anti rabbit IgG at 1/8000 dilution, Exposure time: 30 seconds.



The image on the left is immunohistochemistry of paraffin-embedded Human liver cancer tissue using PACO18257(MYL9 Antibody) at dilution 1/80, on the right is treated with synthetic peptide. (Original magnification: x—200).