

Product Information

Size:

50ul

Reactivity:

Human, Mouse, Rat

Source:

Rabbit

Isotype:

IgG

Applications:

ELISA, WB, IHC

Recommended dilutions:

ELISA:1:2000-1:10000, WB:1:1000-1:5000,
IHC:1:50-1:200

Protein Background:

Myosin, a structural component of muscle, consists of two heavy chains and four light chains. The protein encoded by this gene is a myosin light chain that may regulate muscle contraction by modulating the ATPase activity of myosin heads. The encoded protein binds calcium and is activated by myosin light chain kinase. Two transcript variants encoding different isoforms have been found for this gene.

Gene ID:

MYL9

Uniprot

P24844

Synonyms:

myosin, light chain 9, regulatory

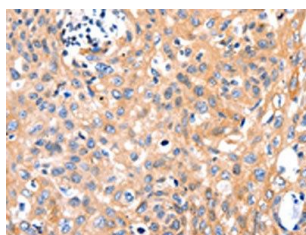
Immunogen:

Synthetic peptide of human MYL9.

Storage:

-20° C, pH7.4 PBS, 0.05% NaN₃, 40% Glycerol

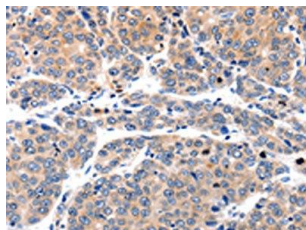
Product Images



The image on the left is immunohistochemistry of paraffin-embedded Human cervical cancer tissue using PACO18258(MYL9 Antibody) at dilution 1/80, on the right is treated with synthetic peptide. (Original magnification: x—200).



Gel: 12%SDS-PAGE, Lysate: 40 μ g, Lane 1-2: Jurkat cells, 231 cells, Primary antibody: PACO18258(MYL9 Antibody) at dilution 1/1500, Secondary antibody: Goat anti rabbit IgG at 1/8000 dilution, Exposure time: 40 seconds.



The image on the left is immunohistochemistry of paraffin-embedded Human liver cancer tissue using PACO18258(MYL9 Antibody) at dilution 1/80, on the right is treated with synthetic peptide. (Original magnification: x—200).