

# SLC10A1 Antibody



PACO18310

---

## Product Information

**Size:**

50ul

**Reactivity:**

Human, Mouse

**Source:**

Rabbit

**Isotype:**

IgG

**Applications:**

ELISA, IHC

**Recommended dilutions:**

ELISA:1:1000-1:2000, IHC:1:15-1:50

**Protein Background:**

The protein encoded by this gene belongs to the sodium/bile acid, cotransporter family, which are integral membrane glycoproteins that participate in the enterohepatic circulation of bile acid, . Two homologous transporters are involved in the reabsorption of bile acid, ; the ileal sodium/bile acid, cotransporter with an apical cell localization that absorbs bile acid, from the intestinal lumen, bile duct and kidney, and the liver-specific sodium/bile acid, cotransporter, represented by this protein, that is found in the basolateral membranes of hepatocytes. Bile acid, are the catabolic product of cholesterol metabolism, hence this protein is important for cholesterol homeostasis.

**Gene ID:**

SLC10A1

**Uniprot**

Q14973

**Synonyms:**

solute carrier family 10 (sodium/bile acid, cotransporter family), member 1

**Immunogen:**

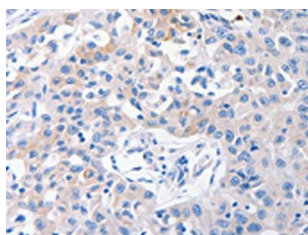
Synthetic peptide of human SLC10A1.

**Storage:**

-20&deg; C, pH7.4 PBS, 0.05% NaN3, 40% Glycerol

## Product Images

---



The image on the left is immunohistochemistry of paraffin-embedded Human lung cancer tissue using PACO18310(SLC10A1 Antibody) at dilution 1/31, on the right is treated with synthetic peptide. (Original magnification: x—200).