

# P2RY11 Antibody



PACO18326

---

## Product Information

**Size:**

50ul

**Reactivity:**

Human

**Source:**

Rabbit

**Isotype:**

IgG

**Applications:**

ELISA, WB, IHC

**Recommended dilutions:**

ELISA:1:1000-1:5000, WB:1:200-1:1000,  
IHC:1:25-1:100

**Protein Background:**

The product of this gene belongs to the family of G-protein coupled receptors. This family has several receptor subtypes with different pharmacological selectivity, which overlaps in some cases, for various adenosine and uridine nucleotides. This receptor is coupled to the stimulation of the phosphoinositide and adenylyl cyclase pathways and behaves as a selective purinoceptor. Naturally occurring read-through transcripts, resulting from intergenic splicing between this gene and an immediately upstream gene (PPAN, encoding peter pan homolog), have been found. The PPAN-P2RY11 read-through mRNA is ubiquitously expressed and encodes a fusion protein that shares identity with each individual gene product.

**Gene ID:**

P2RY11

**Uniprot**

Q96G91

**Synonyms:**

purinergic receptor P2Y, G-protein coupled, 11

**Immunogen:**

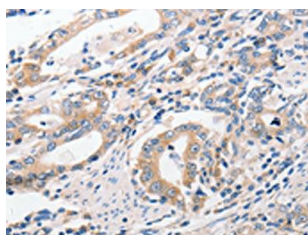
Synthetic peptide of human P2RY11.

**Storage:**

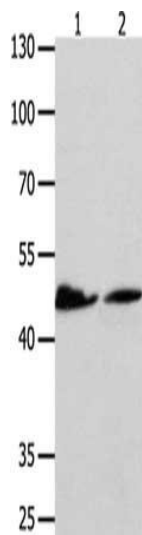
-20&deg; C, pH7.4 PBS, 0.05% NaN<sub>3</sub>, 40% Glycerol

## Product Images

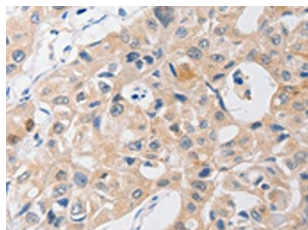
---



The image on the left is immunohistochemistry of paraffin-embedded Human gastric cancer tissue using PACO18326(P2RY11 Antibody) at dilution 1/40, on the right is treated with synthetic peptide. (Original magnification: x—200).



Gel: 10%SDS-PAGE, Lysate: 40 &mu; g, Lane 1-2: HeLa cells, 293T cells, Primary antibody: PACO18326(P2RY11 Antibody) at dilution 1/500, Secondary antibody: Goat anti rabbit IgG at 1/8000 dilution, Exposure time: 1 minute.



The image on the left is immunohistochemistry of paraffin-embedded Human lung cancer tissue using PACO18326(P2RY11 Antibody) at dilution 1/40, on the right is treated with synthetic peptide. (Original magnification: x—200).