

Product Information

Size:

50ul

Reactivity:

Human

Source:

Rabbit

Isotype:

IgG

Applications:

ELISA, WB, IHC

Recommended dilutions:

ELISA:1:1000-1:5000, WB:1:500-1:2000,
IHC:1:50-1:200

Protein Background:

Coagulation factor II receptor is a 7-transmembrane receptor involved in the regulation of thrombotic response. Proteolytic cleavage leads to the activation of the receptor. F2R is a G-protein coupled receptor family member. High affinity receptor for activated thrombin coupled to G proteins that stimulate phosphoinositide hydrolysis. May play a role in platelets activation and in vascular development.

Gene ID:

F2R

Uniprot

P25116

Synonyms:

coagulation factor II (thrombin) receptor

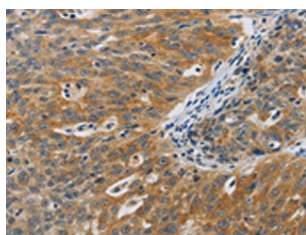
Immunogen:

Synthetic peptide of human F2R.

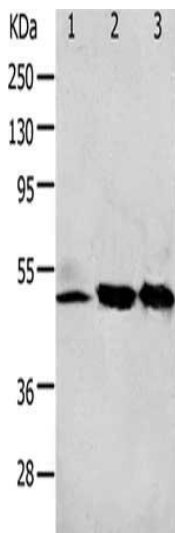
Storage:

-20° C, pH7.4 PBS, 0.05% NaN₃, 40% Glycerol

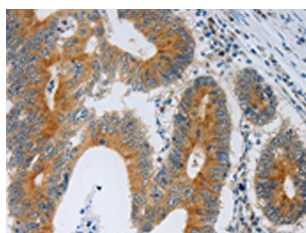
Product Images



The image on the left is immunohistochemistry of paraffin-embedded Human ovarian cancer tissue using PACO18331(F2R Antibody) at dilution 1/40, on the right is treated with synthetic peptide. (Original magnification: x—200).



Gel: 10+12%SDS-PAGE, Lysate: 40 μ g, Lane 1-3: 293T cells, K562 cells, human fetal kidney tissue, Primary antibody: PACO18331(F2R Antibody) at dilution 1/650, Secondary antibody: Goat anti rabbit IgG at 1/8000 dilution, Exposure time: 2 minutes.



The image on the left is immunohistochemistry of paraffin-embedded Human colon cancer tissue using PACO18331(F2R Antibody) at dilution 1/40, on the right is treated with synthetic peptide. (Original magnification: x—200).