

### Product Information

**Size:**

50ul

**Reactivity:**

Human

**Source:**

Rabbit

**Isotype:**

IgG

**Applications:**

ELISA, WB

**Recommended dilutions:**

ELISA:1:2000-1:5000, WB:1:500-1:2000

**Protein Background:**

The tumor suppressor WT1 represses and activates transcription. The protein encoded by this gene is a WT1-interacting protein that itself functions as a transcriptional repressor. It contains a putative leucine zipper domain which interacts with the zinc finger DNA binding domain of WT1. This protein is specifically upregulated during apoptosis of prostate cells.

**Gene ID:**

PAWR

**Uniprot**

Q96IZ0

**Synonyms:**

PRKC, apoptosis, WT1, regulator

**Immunogen:**

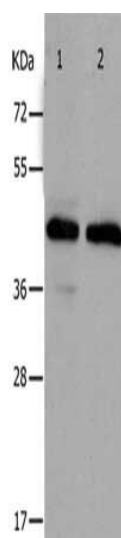
Synthetic peptide of human PAWR.

**Storage:**

-20&deg; C, pH7.4 PBS, 0.05% NaN<sub>3</sub>, 40% Glycerol

## Product Images

---



Gel: 10%SDS-PAGE, Lysate: 30 &mu; g, Lane 1-2: Hela cells, A549 cells,  
Primary antibody: PACO18333(PAWR Antibody) at dilution 1/400,  
Secondary antibody: Goat anti rabbit IgG at 1/8000 dilution, Exposure  
time: 10 seconds.