

PACO18354

Product Information

Size:

50ul

Reactivity:

Human

Source:

Rabbit

Isotype:

IgG

Applications:

ELISA, WB, IHC

Recommended dilutions:

ELISA:1:1000-1:5000, WB:1:500-1:2000,
IHC:1:25-1:100

Protein Background:

The genes coding for human pepsinogen (PGA3/PGA4/PGA5, PGA4, and PGA5) were assigned to chromosome region 11q13 by in situ hybridization. Previously we localized the PGA gene complex to a centromeric region of chromosome 11 (p11----q13) by Southern blot analysis of mouse-human somatic cell hybrids. Shows particularly broad specificity; although bonds involving phenylalanine and leucine are preferred, many others are also cleaved to some extent.

Gene ID:

PGA3/PGA4/PGA5

Uniprot

P0DJD8/P0DJD7/P0DJD9

Synonyms:

Pepsinogen 3/Pepsinogen 4/Pepsinogen 5, group I (pepsinogen A)

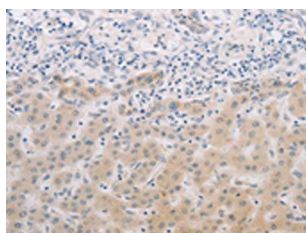
Immunogen:

Synthetic peptide of human PGA3/PGA4/PGA5.

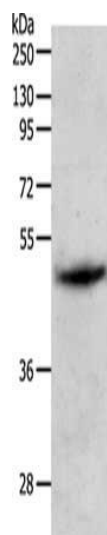
Storage:

-20° C, pH7.4 PBS, 0.05% NaN3, 40% Glycerol

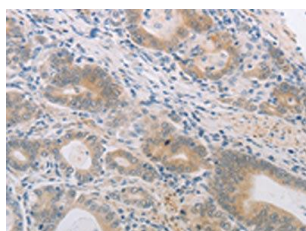
Product Images



The image on the left is immunohistochemistry of paraffin-embedded Human liver cancer tissue using PACO18354(PGA3/PGA4/PGA5 Antibody) at dilution 1/60, on the right is treated with synthetic peptide. (Original magnification: x—200).



Gel: 10%SDS-PAGE, Lysate: 60 μ g, Lane: Human liver cancer tissue, Primary antibody: PACO18354(PGA3/PGA4/PGA5 Antibody) at dilution 1/1000, Secondary antibody: Goat anti rabbit IgG at 1/8000 dilution, Exposure time: 10 minutes.



The image on the left is immunohistochemistry of paraffin-embedded Human gastric cancer tissue using PACO18354(PGA3/PGA4/PGA5 Antibody) at dilution 1/60, on the right is treated with synthetic peptide. (Original magnification: x—200).