

# PIBF1 Antibody



PACO18356

---

## Product Information

**Size:**

50ul

**Reactivity:**

Human

**Source:**

Rabbit

**Isotype:**

IgG

**Applications:**

ELISA, WB, IHC

**Recommended dilutions:**

ELISA:1:1000-1:2000, WB:1:200-1:1000,  
IHC:1:25-1:100

**Protein Background:**

Progesterone-induced-blocking factor 1 is a protein that in humans is encoded by the PIBF1 gene. It has been shown to localize to the centrosome and has also been named CEP90. Mediator of progesterone that by acting on the phospholipase A2 enzyme interferes with arachidonic acid, metabolism, induces a Th2 biased immune response, and by controlling NK activity exerts an anti-abortive effect.

**Gene ID:**

PIBF1

**Uniprot**

Q8WXW3

**Synonyms:**

progesterone immunomodulatory binding factor 1

**Immunogen:**

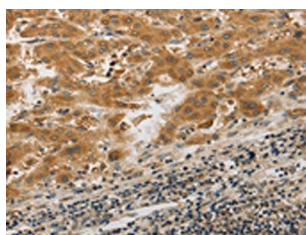
Synthetic peptide of human PIBF1.

**Storage:**

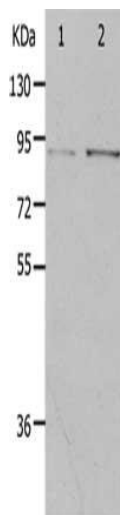
-20&deg; C, pH7.4 PBS, 0.05% NaN3, 40% Glycerol

## Product Images

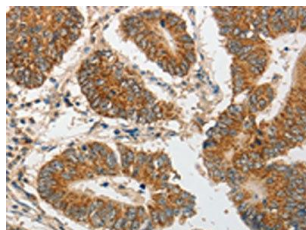
---



The image on the left is immunohistochemistry of paraffin-embedded Human liver cancer tissue using PACO18356(PIBF1 Antibody) at dilution 1/20, on the right is treated with synthetic peptide. (Original magnification: x—200).



Gel: 10%SDS-PAGE, Lysate: 40 &mu; g, Lane 1-2: HeLa cells, 293T cells, Primary antibody: PACO18356(PIBF1 Antibody) at dilution 1/400, Secondary antibody: Goat anti rabbit IgG at 1/8000 dilution, Exposure time: 2 minutes.



The image on the left is immunohistochemistry of paraffin-embedded Human colon cancer tissue using PACO18356(PIBF1 Antibody) at dilution 1/20, on the right is treated with synthetic peptide. (Original magnification: x—200).