

Product Information

Size:

50ul

Reactivity:

Human

Source:

Rabbit

Isotype:

IgG

Applications:

ELISA, IHC

Recommended dilutions:

ELISA:1:2000-1:5000, IHC:1:50-1:200

Protein Background:

Progesterone-induced-blocking factor 1 is a protein that in humans is encoded by the PIBF1 gene. It has been shown to localize to the centrosome and has also been named CEP90. Mediator of progesterone that by acting on the phospholipase A2 enzyme interferes with arachidonic acid, metabolism, induces a Th2 biased immune response, and by controlling NK activity exerts an anti-abortive effect.

Gene ID:

PIBF1

Uniprot

Q8WXW3

Synonyms:

progesterone immunomodulatory binding factor 1

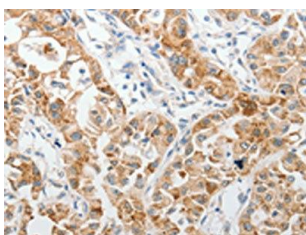
Immunogen:

Synthetic peptide of human PIBF1.

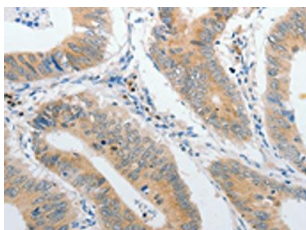
Storage:

-20° C, pH7.4 PBS, 0.05% NaN3, 40% Glycerol

Product Images



The image on the left is immunohistochemistry of paraffin-embedded Human lung cancer tissue using PACO18357 (PIBF1 Antibody) at dilution 1/60, on the right is treated with synthetic peptide. (Original magnification: x—200).



The image on the left is immunohistochemistry of paraffin-embedded Human colon cancer tissue using PACO18357 (PIBF1 Antibody) at dilution 1/60, on the right is treated with synthetic peptide. (Original magnification: x—200).