

PACO18390

---

## Product Information

**Size:**

50ul

**Reactivity:**

Human

**Source:**

Rabbit

**Isotype:**

IgG

**Applications:**

ELISA, IHC

**Recommended dilutions:**

ELISA:1:1000-1:2000, IHC:1:25-1:100

**Protein Background:**

SPRN (shadow of prion protein), also known as SHO or SHADOO, is a 151 amino acid, cytoplasmic protein that is mainly expressed in brain. SPRN is considered a prion-like protein that has PrP(C)-like neuroprotective activity and may act as a modulator for the biological actions of normal and abnormal PrP. In humans, mutations in the gene encoding SPRN may be associated with variant and sporadic Creutzfeldt-Jakob disease, a degenerative neurological disorder that is incurable and invariably fatal.

**Gene ID:**

SPRN

**Uniprot**

Q5BIV9

**Synonyms:**

shadow of prion protein homolog (zebrafish)

**Immunogen:**

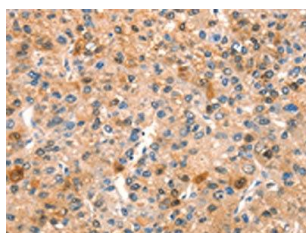
Synthetic peptide of human SPRN.

**Storage:**

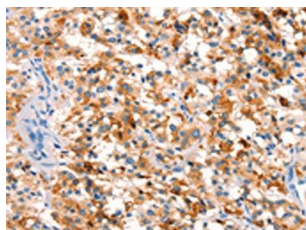
-20&deg; C, pH7.4 PBS, 0.05% NaN3, 40% Glycerol

## Product Images

---



The image on the left is immunohistochemistry of paraffin-embedded Human liver cancer tissue using PACO18390 (SPRN Antibody) at dilution 1/15, on the right is treated with synthetic peptide. (Original magnification: x—200).



The image on the left is immunohistochemistry of paraffin-embedded Human thyroid cancer tissue using PACO18390 (SPRN Antibody) at dilution 1/15, on the right is treated with synthetic peptide. (Original magnification: x—200).