

### Product Information

**Size:**

50ul

**Reactivity:**

Human, Mouse

**Source:**

Rabbit

**Isotype:**

IgG

**Applications:**

ELISA, WB, IHC

**Recommended dilutions:**

ELISA:1:1000-1:5000, WB:1:500-1:2000,  
IHC:1:25-1:100

**Protein Background:**

This gene encodes a member of the protein kinase superfamily and the doublecortin family. The protein encoded by this gene contains two N-terminal doublecortin domains, which bind microtubules and regulate microtubule polymerization, a C-terminal serine/threonine protein kinase domain, which shows substantial homology to Ca<sup>2+</sup>/calmodulin-dependent protein kinase, and a serine/proline-rich domain in between the doublecortin and the protein kinase domains, which mediates multiple protein-protein interactions. The microtubule-polymerizing activity of the encoded protein is independent of its protein kinase activity. The encoded protein is involved in several different cellular processes, including neuronal migration, retrograde transport, neuronal apoptosis and neurogenesis. This gene is up-regulated by brain-derived neurotrophic factor and associated with memory and general cognitive abilities.

**Gene ID:**

SLC1A4

**Uniprot**

P43007

**Synonyms:**

Solute carrier family 1 (glutamate/neutral amino acid, transporter), member 4

**Immunogen:**

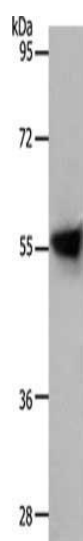
Synthetic peptide of human SLC1A4.

**Storage:**

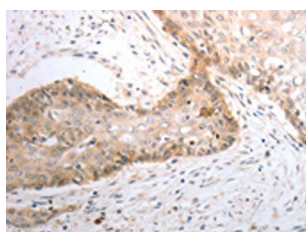
-20&deg; C, pH7.4 PBS, 0.05% NaN<sub>3</sub>, 40% Glycerol

## Product Images

---



Gel: 10+12%SDS-PAGE, Lysate: 30  $\mu$ g, Lane: Human liver cancer tissue, Primary antibody: PACO18403(SLC1A4 Antibody) at dilution 1/800, Secondary antibody: Goat anti rabbit IgG at 1/8000 dilution, Exposure time: 20 seconds.



The image on the left is immunohistochemistry of paraffin-embedded Human cervical cancer tissue using PACO18403(SLC1A4 Antibody) at dilution 1/40, on the right is treated with synthetic peptide. (Original magnification: x—200).