
Product Information

Size:

50ul

Reactivity:

Human, Mouse

Source:

Rabbit

Isotype:

IgG

Applications:

ELISA, IHC

Recommended dilutions:

ELISA:1:2000-1:5000, IHC:1:25-1:100

Protein Background:

HLA-DRB3 belongs to the HLA class II beta chain paralogues. This class II molecule is a heterodimer consisting of an alpha (DRA) and a beta (DRB) chain, both anchored in the membrane. It plays a central role in the immune system by presenting peptides derived from extracellular proteins. Class II molecules are expressed in antigen presenting cells (APC: B lymphocytes, dendritic cells, macrophages). The beta chain is approximately 26-28 kDa and its gene contains 6 exons. Exon one encodes the leader peptide, exons 2 and 3 encode the two extracellular domains, exon 4 encodes the transmembrane domain and exon 5 encodes the cytoplasmic tail. Within the DR molecule the beta chain contains all the polymorphisms specifying the peptide binding specificities. Typing for these polymorphisms is routinely done for bone marrow and kidney transplantation. DRB1 is expressed at a level five times higher than its paralogues DRB3, DRB4 and DRB5. The presence of DRB3 is linked with allelic variants of DRB1, otherwise it is omitted.

Gene ID:

COL4A3

Uniprot

Q01955

Synonyms:

collagen, type IV, alpha 3 (Goodpasture antigen)

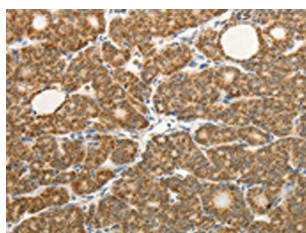
Immunogen:

Synthetic peptide of human COL4A3.

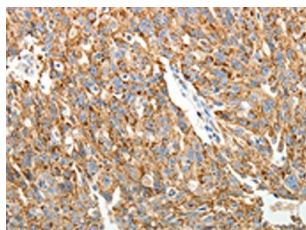
Storage:

-20° C, pH7.4 PBS, 0.05% NaN3, 40% Glycerol

Product Images



The image on the left is immunohistochemistry of paraffin-embedded Human thyroid cancer tissue using PACO18469 (COL4A3 Antibody) at dilution 1/20, on the right is treated with synthetic peptide. (Original magnification: x—200).



The image on the left is immunohistochemistry of paraffin-embedded Human ovarian cancer tissue using PACO18469 (COL4A3 Antibody) at dilution 1/20, on the right is treated with synthetic peptide. (Original magnification: x—200).