

Product Information

Size:

50ul

Reactivity:

Human, Mouse, Rat

Source:

Rabbit

Isotype:

IgG

Applications:

ELISA, IHC

Recommended dilutions:

ELISA:1:2000-1:5000, IHC:1:25-1:100

Protein Background:

Ubiquitin, a highly conserved protein that has a major role in targeting cellular proteins for degradation by the 26S proteasome, is synthesized as a precursor protein consisting of either polyubiquitin chains or a single ubiquitin fused to an unrelated protein. This gene encodes a fusion protein consisting of ubiquitin at the N terminus and ribosomal protein S27a at the C terminus. When expressed in yeast, the protein is post-translationally processed, generating free ubiquitin monomer and ribosomal protein S27a. Ribosomal protein S27a is a component of the 40S subunit of the ribosome and belongs to the S27AE family of ribosomal proteins. It contains C4-type zinc finger domains and is located in the cytoplasm. Pseudogenes derived from this gene are present in the genome. As with ribosomal protein S27a, ribosomal protein L40 is also synthesized as a fusion protein with ubiquitin; similarly, ribosomal protein S30 is synthesized as a fusion protein with the ubiquitin-like protein fubi.

Gene ID:

YBX1

Uniprot

P67809

Synonyms:

Y box binding protein 1

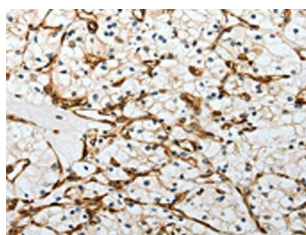
Immunogen:

Synthetic peptide of human YBX1.

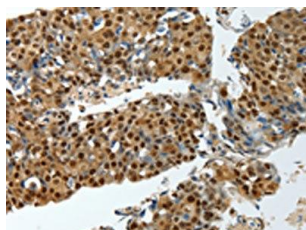
Storage:

-20° C, pH7.4 PBS, 0.05% NaN₃, 40% Glycerol

Product Images



The image on the left is immunohistochemistry of paraffin-embedded Human renal cancer tissue using PACO18479(YBX1 Antibody) at dilution 1/15, on the right is treated with synthetic peptide. (Original magnification: x—200).



The image on the left is immunohistochemistry of paraffin-embedded Human breast cancer tissue using PACO18479(YBX1 Antibody) at dilution 1/15, on the right is treated with synthetic peptide. (Original magnification: x—200).