

PACO18561

Product Information

Size:

50ul

Reactivity:

Human

Source:

Rabbit

Isotype:

IgG

Applications:

ELISA, IHC

Recommended dilutions:

ELISA:1:2000-1:5000, IHC:1:20-1:100

Protein Background:

Activates Rho-GTPases by promoting the exchange of GDP for GTP. May be involved in epithelial barrier permeability, cell motility and polarization, dendritic spine morphology, antigen presentation, leukemic cell differentiation, cell cycle regulation, innate immune response, and cancer. Binds Rac-GTPases, but does not seem to promote nucleotide exchange activity toward Rac-GTPases, which was uniquely reported in May stimulate instead the cortical activity of Rac. Inactive toward CDC42, TC10, or Ras-GTPases. Forms an intracellular sensing system along with NOD1 for the detection of microbial effectors during cell invasion by pathogens. Required for RHOA and RIP2 dependent NF-kappaB signaling pathways activation upon *S. flexneri* cell invasion. Involved not only in sensing peptidoglycan (PGN)-derived mucopeptides through NOD1 that is independent of its GEF activity, but also in the activation of NF-kappaB by *Shigella* effector proteins (IpgB2 and OspB) which requires its GEF activity and the activation of RhoA.

Gene ID:

ANGPTL5

Uniprot

Q86XS5

Synonyms:

angiopoietin-like 5

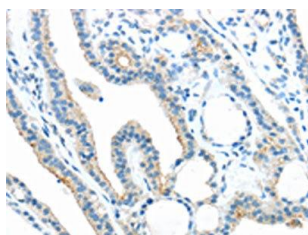
Immunogen:

Synthetic peptide of human ANGPTL5.

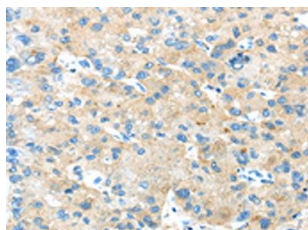
Storage:

-20° C, pH7.4 PBS, 0.05% NaN3, 40% Glycerol

Product Images



The image on the left is immunohistochemistry of paraffin-embedded Human thyroid cancer tissue using PACO18561(ANGPTL5 Antibody) at dilution 1/25, on the right is treated with synthetic peptide. (Original magnification: x—200).



The image on the left is immunohistochemistry of paraffin-embedded Human liver cancer tissue using PACO18561(ANGPTL5 Antibody) at dilution 1/25, on the right is treated with synthetic peptide. (Original magnification: x—200).