

Product Information

Size:

50ul

Reactivity:

Human, Mouse

Source:

Rabbit

Isotype:

IgG

Applications:

ELISA, WB, IHC

Recommended dilutions:

ELISA:1:1000-1:2000, WB:1:200-1:1000,
IHC:1:50-1:200

Protein Background:

Receptor tyrosine kinase which binds promiscuously membrane-bound ephrin-A family ligands residing on adjacent cells, leading to contact-dependent bidirectional signaling into neighboring cells. The signaling pathway downstream of the receptor is referred to as forward signaling while the signaling pathway downstream of the ephrin ligand is referred to as reverse signaling. Activated by the ligand ephrin-A1/EFNA1 regulates migration, integrin-mediated adhesion, proliferation and differentiation of cells. Regulates cell adhesion and differentiation through DSG1/desmoglein-1 and inhibition of the ERK1/ERK2 (MAPK3/MAPK1, respectively) signaling pathway. May also participate in UV radiation-induced apoptosis and have a ligand-independent stimulatory effect on chemotactic cell migration. During development, may function in distinctive aspects of pattern formation and subsequently in development of several fetal tissues.

Gene ID:

ANAPC4

Uniprot

Q9UJX5

Synonyms:

anaphase promoting complex subunit 4

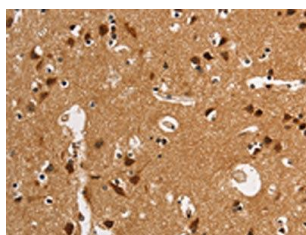
Immunogen:

Synthetic peptide of human ANAPC4.

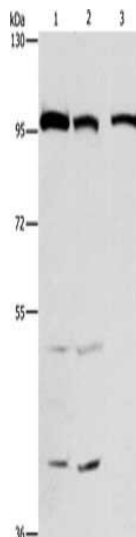
Storage:

-20° C, pH7.4 PBS, 0.05% NaN3, 40% Glycerol

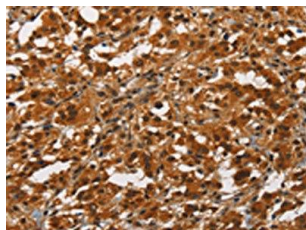
Product Images



The image on the left is immunohistochemistry of paraffin-embedded Human brain tissue using PACO18570(ANAPC4 Antibody) at dilution 1/50, on the right is treated with synthetic peptide. (Original magnification: x—200).



Gel: 6%SDS-PAGE, Lysate: 40 μ g, Lane 1-3: HepG2 cells, 231 cells, hela cells, Primary antibody: PACO18570(ANAPC4 Antibody) at dilution 1/300, Secondary antibody: Goat anti rabbit IgG at 1/8000 dilution, Exposure time: 1 minute.



The image on the left is immunohistochemistry of paraffin-embedded Human thyroid cancer tissue using PACO18570(ANAPC4 Antibody) at dilution 1/50, on the right is treated with synthetic peptide. (Original magnification: x—200).