

PACO18799

---

## Product Information

**Size:**

50ul

**Reactivity:**

Human, Mouse

**Source:**

Rabbit

**Isotype:**

IgG

**Applications:**

ELISA, WB, IHC

**Recommended dilutions:**

ELISA:1:2000-1:10000, WB:1:1000-1:5000,  
IHC:1:50-1:200

**Protein Background:**

G protein-coupled receptor that is activated by a major product of dietary fiber digestion, the short chain fatty acid, (SCFAs), and that plays a role in the regulation of whole-body energy homeostasis and in intestinal immunity. In omnivorous mammals, the short chain fatty acid, acetate, propionate and butyrate are produced primarily by the gut microbiome that metabolizes dietary fibers. SCFAs serve as a source of energy but also act as signaling molecules. That G protein-coupled receptor is probably coupled to the pertussis toxin-sensitive, G(i/o)-alpha family of G proteins but also to the Gq family. Its activation results in the formation of inositol 1,4,5-trisphosphate, the mobilization of intracellular calcium, the phosphorylation of the MAPK3/ERK1 and MAPK1/ERK2 kinases and the inhibition of intracellular cAMP accumulation. May play a role in glucose homeostasis by regulating the secretion of GLP-1, in response to short-chain fatty acid, accumulating in the intestine.

**Gene ID:**

ADCYAP1R1

**Uniprot**

P41586

**Synonyms:**

Adenylate cyclase activating polypeptide 1 (pituitary) receptor type I

**Immunogen:**

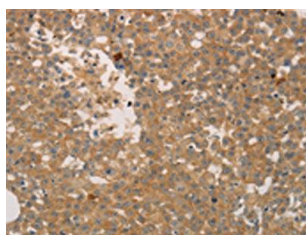
Synthetic peptide of human ADCYAP1R1.

**Storage:**

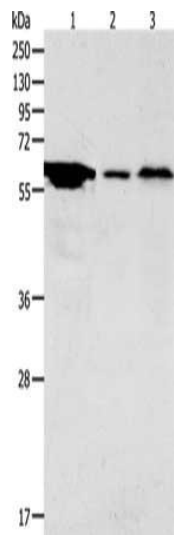
-20&deg; C, pH7.4 PBS, 0.05% NaN3, 40% Glycerol

## Product Images

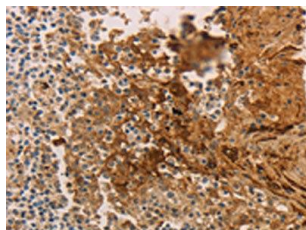
---



The image on the left is immunohistochemistry of paraffin-embedded Human breast cancer tissue using PACO18799(ADCYAP1R1 Antibody) at dilution 1/70, on the right is treated with synthetic peptide. (Original magnification: x—200).



Gel: 10%SDS-PAGE, Lysate: 40 &mu; g, Lane 1-3: Hela cells, Mouse stomach tissue, Mouse brain tissue, Primary antibody: PACO18799(ADCYAP1R1 Antibody) at dilution 1/2000, Secondary antibody: Goat anti rabbit IgG at 1/8000 dilution, Exposure time: 5 minutes.



The image on the left is immunohistochemistry of paraffin-embedded Human tonsil tissue using PACO18799(ADCYAP1R1 Antibody) at dilution 1/70, on the right is treated with synthetic peptide. (Original magnification: x—200).