

PACO18879

---

## Product Information

**Size:**

50ul

**Reactivity:**

Human, Mouse, Rat

**Source:**

Rabbit

**Isotype:**

IgG

**Applications:**

ELISA, IHC

**Recommended dilutions:**

ELISA:1:2000-1:5000, IHC:1:50-1:200

**Protein Background:**

The proteasome is a multicatalytic proteinase complex with a highly ordered ring shaped 20S core structure. The core structure is composed of 4 rings of 28 non identical subunits; 2 rings are composed of 7 alpha subunits and 2 rings are composed of 7 beta subunits. Proteasomes are distributed throughout eukaryotic cells at a high concentration and cleave peptides in an ATP/ubiquitin dependent process in a non-lysosomal pathway. An essential function of a modified proteasome, the immunoproteasome, is the processing of class I MHC peptides. PSMB2 is a member of the proteasome B-type family, also known as the T1B family, that is a 20S core beta subunit. The proteasome is a multicatalytic proteinase complex with a highly ordered ring shaped 20S core structure. The core structure is composed of 4 rings of 28 non identical subunits; 2 rings are composed of 7 alpha subunits and 2 rings are composed of 7 beta subunits.

**Gene ID:**

SCN11A

**Uniprot**

Q9UI33

**Synonyms:**

sodium channel, voltage-gated, type XI, alpha subunit

**Immunogen:**

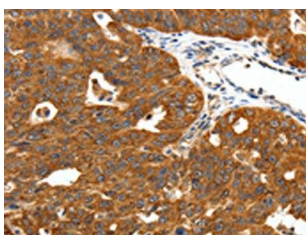
Synthetic peptide of human SCN11A.

**Storage:**

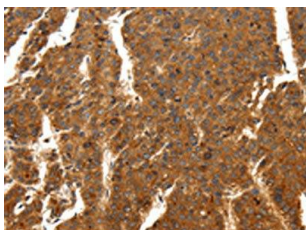
-20&deg; C, pH7.4 PBS, 0.05% NaN<sub>3</sub>, 40% Glycerol

## Product Images

---



The image on the left is immunohistochemistry of paraffin-embedded Human ovarian cancer tissue using PACO18879(SCN11A Antibody) at dilution 1/50, on the right is treated with synthetic peptide. (Original magnification: x—200).



The image on the left is immunohistochemistry of paraffin-embedded Human breast cancer tissue using PACO18879(SCN11A Antibody) at dilution 1/50, on the right is treated with synthetic peptide. (Original magnification: x—200).