

---

### Product Information

**Size:**

50ul

**Reactivity:**

Human, Mouse

**Source:**

Rabbit

**Isotype:**

IgG

**Applications:**

ELISA, WB

**Recommended dilutions:**

ELISA:1:2000-1:5000, WB:1:500-1:2000

**Protein Background:**

Accepts ubiquitin from the E1 complex and catalyzes its covalent attachment to other proteins. In vitro catalyzes 'Lys-11'-, as well as 'Lys-48'-linked polyubiquitination. Cooperates with the E2 CDC34 and the SCF(FBXW11) E3 ligase complex for the polyubiquitination of NFKBIA leading to its subsequent proteasomal degradation. Acts as an initiator E2, priming the phosphorylated NFKBIA target at positions 'Lys-21' and/or 'Lys-22' with a monoubiquitin. Ubiquitin chain elongation is then performed by CDC34, building ubiquitin chains from the UBE2D3-primed NFKBIA-linked ubiquitin. Acts also as an initiator E2, in conjunction with RNF8, for the priming of PCNA. Monoubiquitination of PCNA, and its subsequent polyubiquitination, are essential events in the operation of the DNA damage tolerance (DDT) pathway that is activated after DNA damage caused by UV or chemical agents during S-phase. Associates with the BRCA1/BARD1 E3 ligase complex to perform ubiquitination at DNA damage sites following ionizing radiation leading to DNA repair.

**Gene ID:**

TRPM5

**Uniprot**

Q9NZQ8

**Synonyms:**

transient receptor potential cation channel, subfamily M, member 5

**Immunogen:**

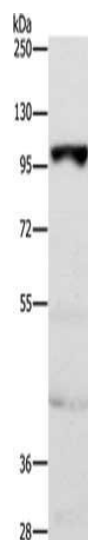
Synthetic peptide of human TRPM5.

**Storage:**

-20&deg; C, pH7.4 PBS, 0.05% NaN3, 40% Glycerol

## Product Images

---



Gel: 10%SDS-PAGE, Lysate: 40  $\mu$ g, Lane: Mouse heart tissue, Primary antibody: PACO18997(TRPM5 Antibody) at dilution 1/850, Secondary antibody: Goat anti rabbit IgG at 1/8000 dilution, Exposure time: 5 seconds.