

Product Information

Size:

50ul

Reactivity:

Human, Mouse

Source:

Rabbit

Isotype:

IgG

Applications:

ELISA, WB

Recommended dilutions:

ELISA:1:1000-1:2000, WB:1:200-1:1000

Protein Background:

Minor protein of the capsid that localizes along the inner surface of the virion, within the central cavities beneath the L1 pentamers. Plays a role in capsid stabilization through interaction with the major capsid protein L1. Once the virion enters the host cell, escorts the genomic DNA into the nucleus, in particular by promoting virion endosomal escape. It is involved, through its interaction with host dynein, in the intracellular microtubule-dependent transport of viral capsid toward the nucleus. Mediates the viral genome import into the nucleus through binding to host importins. Mediates the viral genome import into the nucleus through binding to host importins. Once within the nucleus, L2 localizes viral genomes to PML bodies in order to activate early gene expression for establishment of infection. Later on, promotes late gene expression by interacting with the viral E2 protein and by inhibiting its transcriptional activation functions.

Gene ID:

ASCC2

Uniprot

Q9H118

Synonyms:

activating signal cointegrator 1 complex subunit 2

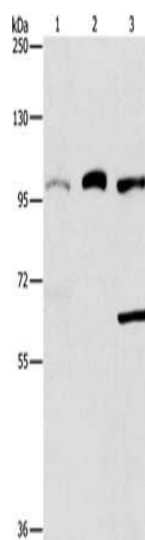
Immunogen:

Synthetic peptide of human ASCC2.

Storage:

-20° C, pH7.4 PBS, 0.05% NaN3, 40% Glycerol

Product Images



Gel: 6%SDS-PAGE, Lysate: 40 μ g, Lane 1-3: 293T cells, A431 cells, hepG2 cells, Primary antibody: PACO19253(ASCC2 Antibody) at dilution 1/367, Secondary antibody: Goat anti rabbit IgG at 1/8000 dilution, Exposure time: 20 seconds.