

Product Information

Size:

50ul

Reactivity:

Human, Mouse, Rat

Source:

Rabbit

Isotype:

IgG

Applications:

ELISA, IHC

Recommended dilutions:

ELISA:1:1000-1:5000, IHC:1:50-1:200

Protein Background:

E3 SUMO-protein ligase component of the SMC5-SMC6 complex, a complex involved in DNA double-strand break repair by homologous recombination. Is not be required for the stability of the complex. The complex may promote sister chromatid homologous recombination by recruiting the SMC1-SMC3 cohesin complex to double-strand breaks. The complex is required for telomere maintenance via recombination in ALT (alternative lengthening of telomeres) cell lines and mediates sumoylation of shelterin complex (telosome) components which is proposed to lead to shelterin complex disassembly in ALT-associated PML bodies (APBs). Acts as a E3 ligase mediating SUMO attachment to various proteins such as SMC6L1 and TRAX, the shelterin complex subunits TERF1, TERF2, TINF2 and TERF2IP, and maybe the cohesin components RAD21 and STAG2. Required for recruitment of telomeres to PML nuclear bodies. SUMO protein-ligase activity is required for the prevention of DNA damage-induced apoptosis by facilitating DNA repair, and for formation of APBs in ALT cell lines.

Gene ID:

BST1

Uniprot

Q10588

Synonyms:

bone marrow stromal cell antigen 1

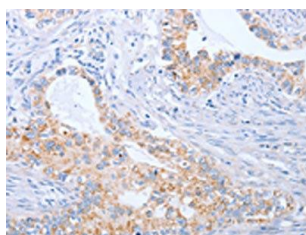
Immunogen:

Synthetic peptide of human BST1.

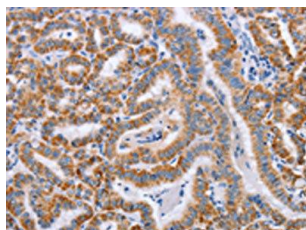
Storage:

-20° C, pH7.4 PBS, 0.05% NaN3, 40% Glycerol

Product Images



The image on the left is immunohistochemistry of paraffin-embedded Human cervical cancer tissue using PACO19365(BST1 Antibody) at dilution 1/50, on the right is treated with synthetic peptide. (Original magnification: x—200).



The image on the left is immunohistochemistry of paraffin-embedded Human thyroid cancer tissue using PACO19365(BST1 Antibody) at dilution 1/50, on the right is treated with synthetic peptide. (Original magnification: x—200).