

### Product Information

**Size:**

50ul

**Reactivity:**

Human

**Source:**

Rabbit

**Isotype:**

IgG

**Applications:**

ELISA, IHC

**Recommended dilutions:**

ELISA:1:1000-1:5000, IHC:1:50-1:200

**Protein Background:**

E3 ubiquitin-protein ligase that promotes the degradation of insoluble ubiquitinated proteins, including insoluble PAX6, poly-Gln repeat expanded HTT and poly-Ala repeat expanded ARX. Mediates PAX6 ubiquitination leading to proteasomal degradation, thereby modulating cortical neurogenesis. May also inhibit PAX6 transcriptional activity, possibly in part by preventing the binding of PAX6 to its consensus sequences. May contribute to the regulation of the intracellular level of HN (humanin) or HN-containing proteins through the proteasomal degradation pathway. Mediates MED15 ubiquitination leading to proteasomal degradation. May contribute to the innate restriction of retroviruses. Upon overexpression, reduces HIV-1 and murine leukemia virus infectivity, by suppressing viral gene expression. Antiviral activity depends on a functional E3 ubiquitin-protein ligase domain.

**Gene ID:**

NCAPG2

**Uniprot**

Q86X12

**Synonyms:**

non-SMC condensin II complex, subunit G2

**Immunogen:**

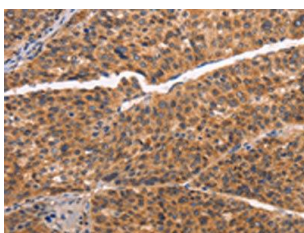
Synthetic peptide of human NCAPG2.

**Storage:**

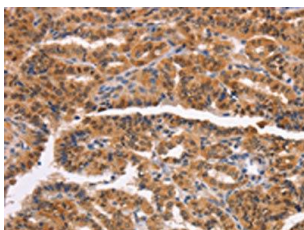
-20&deg; C, pH7.4 PBS, 0.05% NaN3, 40% Glycerol

## Product Images

---



The image on the left is immunohistochemistry of paraffin-embedded Human liver cancer tissue using PACO19385(NCAPG2 Antibody) at dilution 1/50, on the right is treated with synthetic peptide. (Original magnification: x—200).



The image on the left is immunohistochemistry of paraffin-embedded Human thyroid cancer tissue using PACO19385(NCAPG2 Antibody) at dilution 1/50, on the right is treated with synthetic peptide. (Original magnification: x—200).