

Product Information

Size:

50ul

Reactivity:

Human, Mouse, Rat

Source:

Rabbit

Isotype:

IgG

Applications:

ELISA, WB, IHC

Recommended dilutions:

ELISA:1:1000-1:2000, WB:1:200-1:1000,
IHC:1:25-1:100

Protein Background:

Epithelial cell-specific Ca²⁺-regulated actin-modifying protein that modulates the reorganization of microvillar actin filaments. Plays a role in the actin nucleation, actin filament bundle assembly, actin filament capping and severing. Binds phosphatidylinositol 4,5-bisphosphate (PIP2) and lysophosphatidic acid, (LPA); binds LPA with higher affinity than PIP2. Binding to LPA increases its phosphorylation by SRC and inhibits all actin-modifying activities. Binding to PIP2 inhibits actin-capping and -severing activities but enhances actin-bundling activity. Regulates the intestinal epithelial cell morphology, cell invasion, cell migration and apoptosis. Protects against apoptosis induced by dextran sodium sulfate (DSS) in the gastrointestinal epithelium. Appears to regulate cell death by maintaining mitochondrial integrity. Enhances hepatocyte growth factor (HGF)-induced epithelial cell motility, chemotaxis and wound repair. Upon S.

Gene ID:

CDC27

Uniprot

P30260

Synonyms:

cell division cycle 27

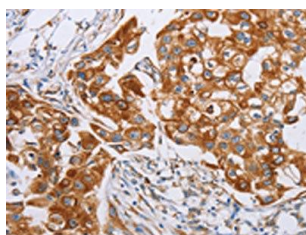
Immunogen:

Synthetic peptide of human CDC27.

Storage:

-20°C; C, pH7.4 PBS, 0.05% NaN₃, 40% Glycerol

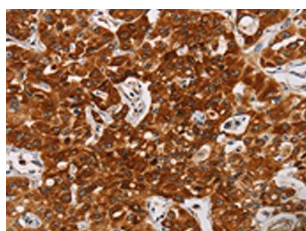
Product Images



The image on the left is immunohistochemistry of paraffin-embedded Human breast cancer tissue using PACO19443(CDC27 Antibody) at dilution 1/20, on the right is treated with synthetic peptide. (Original magnification: x—200).



Gel: 6%SDS-PAGE, Lysate: 40 μ g, Lane: K562 cells, Primary antibody: PACO19443(CDC27 Antibody) at dilution 1/400, Secondary antibody: Goat anti rabbit IgG at 1/8000 dilution, Exposure time: 1 minute.



The image on the left is immunohistochemistry of paraffin-embedded Human lung cancer tissue using PACO19443(CDC27 Antibody) at dilution 1/20, on the right is treated with synthetic peptide. (Original magnification: x—200).