

PACO19461

---

## Product Information

**Size:**

50ul

**Reactivity:**

Human, Mouse

**Source:**

Rabbit

**Isotype:**

IgG

**Applications:**

ELISA, WB, IHC

**Recommended dilutions:**

ELISA:1:2000-1:5000, WB:1:500-1:2000,  
IHC:1:50-1:200

**Protein Background:**

Catalyzes the citrullination/deimination of arginine residues of proteins such as histones, thereby playing a key role in histone code and regulation of stem cell maintenance. Citrullinates histone H1 at 'Arg-54' (to form H1R54ci), histone H3 at 'Arg-2', 'Arg-8', 'Arg-17' and/or 'Arg-26' (to form H3R2ci, H3R8ci, H3R17ci, H3R26ci, respectively) and histone H4 at 'Arg-3' (to form H4R3ci). Acts as a key regulator of stem cell maintenance by mediating citrullination of histone H1: citrullination of 'Arg-54' of histone H1 (H1R54ci) results in H1 displacement from chromatin and global chromatin decondensation, thereby promoting pluripotency and stem cell maintenance. Promotes profound chromatin decondensation during the innate immune response to infection in neutrophils by mediating formation of H1R54ci. Citrullination of histone H3 prevents their methylation by CARM1 and HRMT1L2/PRMT1 and represses transcription. Citrullinates EP300/P300 at 'Arg-2142', which favors its interaction with NCOA2/GRIP1.

**Gene ID:**

CENPE

**Uniprot**

Q02224

**Synonyms:**

centromere protein E, 312kDa

**Immunogen:**

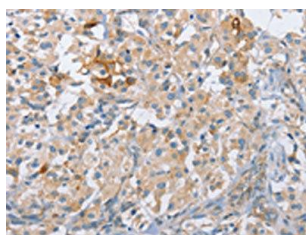
Synthetic peptide of human CENPE.

**Storage:**

-20&deg; C, pH7.4 PBS, 0.05% NaN<sub>3</sub>, 40% Glycerol

## Product Images

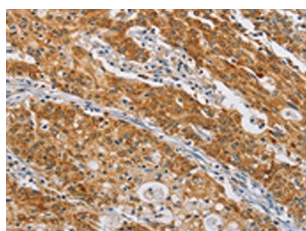
---



The image on the left is immunohistochemistry of paraffin-embedded Human thyroid cancer tissue using PACO19461(CENPE Antibody) at dilution 1/50, on the right is treated with synthetic peptide. (Original magnification: x—200).



Gel: 6%SDS-PAGE, Lysate: 40 &mu; g, Lane 1-2: K562 cells, A431 cells, Primary antibody: PACO19461(CENPE Antibody) at dilution 1/1400, Secondary antibody: Goat anti rabbit IgG at 1/8000 dilution, Exposure time: 1 minute.



The image on the left is immunohistochemistry of paraffin-embedded Human gastric cancer tissue using PACO19461(CENPE Antibody) at dilution 1/50, on the right is treated with synthetic peptide. (Original magnification: x—200).