

Product Information

Size:

50ul

Reactivity:

Human

Source:

Rabbit

Isotype:

IgG

Applications:

ELISA, WB, IHC

Recommended dilutions:

ELISA:1:2000-1:5000, WB:1:500-1:2000,
IHC:1:25-1:100

Protein Background:

This is a neutrophil granule-derived antibacterial and monocyte- and fibroblast-specific chemotactic glycoprotein. Binds heparin. The cytotoxic action is limited to many species of Gram-negative bacteria; this specificity may be explained by a strong affinity of the very basic N-terminal half for the negatively charged lipopolysaccharides that are unique to the Gram-negative bacterial outer envelope. It may play a role in mediating recruitment of monocytes in the second wave of inflammation. Has antibacterial activity against the Gram-negative bacterium *P. aeruginosa*, this activity is inhibited by LPS from *P. aeruginosa*. Acting alone, it does not have antimicrobial activity against the Gram-negative bacteria *A. actinomycetemcomitans* ATCC 29532, *A. actinomycetemcomitans* NCTC 9709, *A. actinomycetemcomitans* FDC-Y4, *H. aphrophilus* ATCC 13252, *E.corrodens* ATCC 23834, *C. sputigena* ATCC 33123, *Capnocytophaga* sp ATCC 33124, *Capnocytophaga* sp ATCC 27872 or *E.coli* ML-35. Has antibacterial activity against *C.*

Gene ID:

CHRNA2

Uniprot

Q15822

Synonyms:

cholinergic receptor, nicotinic, alpha 2 (neuronal)

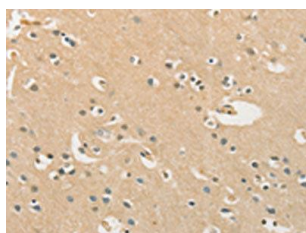
Immunogen:

Synthetic peptide of human CHRNA2.

Storage:

-20°C; C, pH7.4 PBS, 0.05% NaN₃, 40% Glycerol

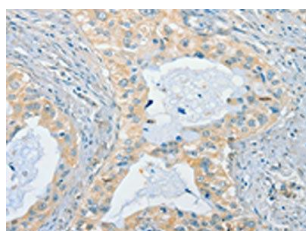
Product Images



The image on the left is immunohistochemistry of paraffin-embedded Human brain tissue using PACO19472(CHRNA2 Antibody) at dilution 1/40, on the right is treated with synthetic peptide. (Original magnification: x—200).



Gel: 8%SDS-PAGE, Lysate: 40 μ g, Lane 1-2: A172 cells, A549 cells, Primary antibody: PACO19472(CHRNA2 Antibody) at dilution 1/950, Secondary antibody: Goat anti rabbit IgG at 1/8000 dilution, Exposure time: 1 minute.



The image on the left is immunohistochemistry of paraffin-embedded Human cervical cancer tissue using PACO19472(CHRNA2 Antibody) at dilution 1/40, on the right is treated with synthetic peptide. (Original magnification: x—200).