
Product Information

Size:

50ul

Reactivity:

Human, Mouse, Rat

Source:

Rabbit

Isotype:

IgG

Applications:

ELISA, IHC

Recommended dilutions:

ELISA:1:1000-1:2000, IHC:1:15-1:50

Protein Background:

Serine/threonine-protein kinase which is involved in the regulation of a wide variety of ion channels, membrane transporters, cell growth, proliferation, survival and migration. Up-regulates Na⁺ channels: SCNN1A/ENAC and SCN5A, K⁺ channels: KCNA3/KV1.3, KCNE1, KCNQ1 and KCNH2/HERG, epithelial Ca²⁺ channels: TRPV5 and TRPV6, chloride channel: BSND, creatine transporter: SLC6A8, Na⁺/dicarboxylate cotransporter: SLC13A2/NADC1, Na⁺-dependent phosphate cotransporter: SLC34A2/NAPI-2B, amino acid, transporters: SLC1A5/ASCT2 and SLC6A19, glutamate transporters: SLC1A3/EAAT1, SLC1A6/EAAT4 and SLC1A7/EAAT5, glutamate receptors: GRIA1/GLUR1 and GRIK2/GLUR6, Na⁺/H⁺ exchanger: SLC9A3/NHE3, and the Na⁺/K⁺ ATPase. Plays a role in the regulation of renal tubular phosphate transport and bone density. Phosphorylates NEDD4L and GSK3B. Positively regulates ER transcription activity through phosphorylation of FLII. Negatively regulates the function of ITCH/AIP4 via its phosphorylation and thereby prevents CXCR4 from being efficiently sorted to lysosomes.

Gene ID:

CRHR2

Uniprot

Q13324

Synonyms:

corticotropin releasing hormone receptor 2

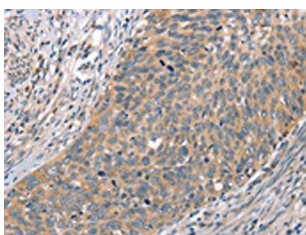
Immunogen:

Synthetic peptide of human CRHR2.

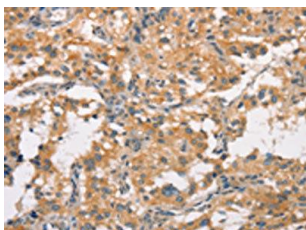
Storage:

-20° C, pH7.4 PBS, 0.05% NaN3, 40% Glycerol

Product Images



The image on the left is immunohistochemistry of paraffin-embedded Human cervical cancer tissue using PACO19509(CRHR2 Antibody) at dilution 1/15, on the right is treated with synthetic peptide. (Original magnification: x—200).



The image on the left is immunohistochemistry of paraffin-embedded Human thyroid cancer tissue using PACO19509(CRHR2 Antibody) at dilution 1/15, on the right is treated with synthetic peptide. (Original magnification: x—200).