
Product Information

Size:

50ul

Reactivity:

Human, Mouse

Source:

Rabbit

Isotype:

IgG

Applications:

ELISA, IHC

Recommended dilutions:

ELISA:1:2000-1:5000, IHC:1:50-1:200

Protein Background:

Transmembrane serine/threonine kinase activin type-2 receptor forming an activin receptor complex with activin type-1 serine/threonine kinase receptors (ACVR1, ACVR1B or ACVR1c). Transduces the activin signal from the cell surface to the cytoplasm and is thus regulating many physiological and pathological processes including neuronal differentiation and neuronal survival, hair follicle development and cycling, FSH production by the pituitary gland, wound healing, extracellular matrix production, immunosuppression and carcinogenesis. Activin is also thought to have a paracrine or autocrine role in follicular development in the ovary. Within the receptor complex, the type-2 receptors act as a primary activin receptors (binds activin-A/INHBA, activin-B/INHBB as well as inhibin-A/INHA-INHBA). The type-1 receptors like ACVR1B act as downstream transducers of activin signals. Activin binds to type-2 receptor at the plasma membrane and activates its serine-threonine kinase.

Gene ID:

CUL4B

Uniprot

Q13620

Synonyms:

cullin 4B

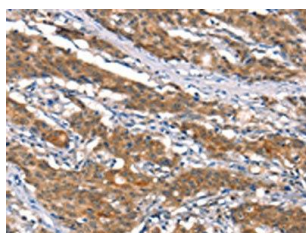
Immunogen:

Synthetic peptide of human CUL4B.

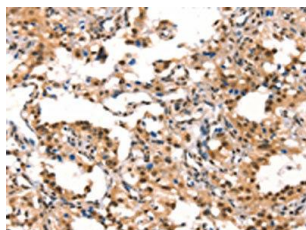
Storage:

-20° C, pH7.4 PBS, 0.05% NaN3, 40% Glycerol

Product Images



The image on the left is immunohistochemistry of paraffin-embedded Human gastric cancer tissue using PACO19528(CUL4B Antibody) at dilution 1/50, on the right is treated with synthetic peptide. (Original magnification: x—200).



The image on the left is immunohistochemistry of paraffin-embedded Human thyroid cancer tissue using PACO19528(CUL4B Antibody) at dilution 1/50, on the right is treated with synthetic peptide. (Original magnification: x—200).