

Product Information

Size:

50ul

Reactivity:

Human, Mouse, Rat

Source:

Rabbit

Isotype:

IgG

Applications:

ELISA, WB

Recommended dilutions:

ELISA:1:1000-1:2000, WB:1:200-1:1000

Protein Background:

Major role in the synthesis of nucleoside triphosphates other than ATP. The ATP gamma phosphate is transferred to the NDP beta phosphate via a ping-pong mechanism, using a phosphorylated active-site intermediate. Through the catalyzed exchange of gamma-phosphate between di- and triphosphonucleosides participates in regulation of intracellular nucleotide homeostasis. Binds to anionic phospholipids, predominantly to cardiolipin; the binding inhibits its phosphotransfer activity. Acts as mitochondria-specific NDK; its association with cardiolipin-containing mitochondrial inner membrane is coupled to respiration suggesting that ADP locally regenerated in the mitochondrion innermembrane space by its activity is directly taken up via ANT ADP/ATP translocase into the matrix space to stimulate respiratory ATP regeneration. Proposed to increase GTP-loading on dynamin-related GTPase OPA1 in mitochondria.

Gene ID:

DIO2

Uniprot

Q92813

Synonyms:

deiodinase, iodothyronine, type II

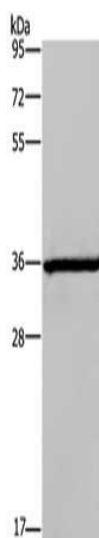
Immunogen:

Synthetic peptide of human DIO2.

Storage:

-20° C, pH7.4 PBS, 0.05% NaN₃, 40% Glycerol

Product Images



Gel: 6%SDS-PAGE, Lysate: 50 μ g, Lane: Mouse brain tissue, Primary antibody: PACO19574(DIO2 Antibody) at dilution 1/200, Secondary antibody: Goat anti rabbit IgG at 1/8000 dilution, Exposure time: 40 seconds.