

Product Information

Size:

50ul

Reactivity:

Human, Mouse

Source:

Rabbit

Isotype:

IgG

Applications:

ELISA, WB, IHC

Recommended dilutions:

ELISA:1:2000-1:5000, WB:1:500-1:2000,
IHC:1:50-1:200

Protein Background:

DNA helicase involved in cellular proliferation. Possesses DNA-dependent ATPase and helicase activities. This helicase translocates on single-stranded DNA in the 5' to 3' direction in the presence of ATP and, to a lesser extent, dATP. Its unwinding activity requires a 5'-single-stranded region for helicase loading, since flush-ended duplex structures do not support unwinding. The helicase activity is capable of displacing duplex regions up to 100 bp, which can be extended to 500 bp by RPA or the cohesion establishment factor, the Ctf18-RFC (replication factor C) complex activities. Stimulates the flap endonuclease activity of FEN1. Required for normal sister chromatid cohesion. Required for recruitment of bovine papillomavirus type 1 regulatory protein E2 to mitotic chromosomes and for viral genome maintenance. Required for maintaining the chromosome segregation and is essential for embryonic development and the prevention of aneuploidy. May function during either S, G2, or M phase of the cell cycle.

Gene ID:

AIMP1

Uniprot

Q12904

Synonyms:

aminoacyl tRNA synthetase complex-interacting multifunctional protein 1

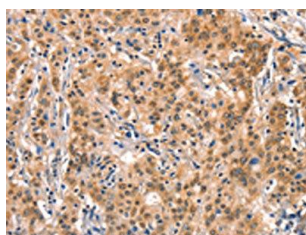
Immunogen:

Synthetic peptide of human AIMP1.

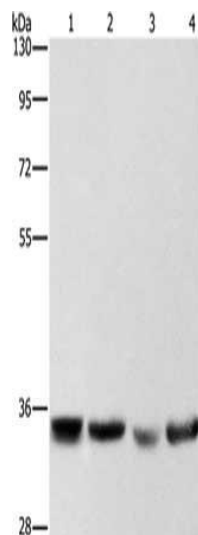
Storage:

-20°C; C, pH7.4 PBS, 0.05% NaN3, 40% Glycerol

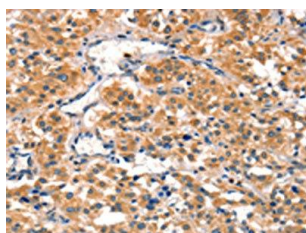
Product Images



The image on the left is immunohistochemistry of paraffin-embedded Human gastric cancer tissue using PACO19597(AIMP1 Antibody) at dilution 1/40, on the right is treated with synthetic peptide. (Original magnification: x—200).



Gel: 8%SDS-PAGE, Lysate: 40 μ g, Lane 1-4: Hela cells, hepG2 cells, A549 cells, 293T cells, Primary antibody: PACO19597(AIMP1 Antibody) at dilution 1/400, Secondary antibody: Goat anti rabbit IgG at 1/8000 dilution, Exposure time: 1 second.



The image on the left is immunohistochemistry of paraffin-embedded Human thyroid cancer tissue using PACO19597(AIMP1 Antibody) at dilution 1/40, on the right is treated with synthetic peptide. (Original magnification: x—200).