

Product Information

Size:

50ul

Reactivity:

Human

Source:

Rabbit

Isotype:

IgG

Applications:

ELISA, WB, IHC

Recommended dilutions:

ELISA:1:2000-1:5000, WB:1:500-1:2000,
IHC:1:25-1:100

Protein Background:

Acts as E3 ubiquitin-protein ligase and regulates the degradation of target proteins. Polyubiquitinates MYD88. Negatively regulates MYD88-dependent production of proinflammatory cytokines. Can promote TRIF-dependent production of type I interferon and inhibits infection with vesicular stomatitis virus. Promotes also activation of TBK1 and IRF3. Involved in the ubiquitination of erythropoietin (EPO) and interleukin-3 (IL-3) receptors. Thus, through maintaining basal levels of cytokine receptors, RNF41 is involved in the control of hematopoietic progenitor cell differentiation into myeloerythroid lineages. Contributes to the maintenance of steady-state ERBB3 levels by mediating its growth factor-independent degradation. Involved in the degradation of the inhibitor of apoptosis BIRC6 and thus is an important regulator of cell death by promoting apoptosis.

Gene ID:

ENPP4

Uniprot

Q9Y6X5

Synonyms:

ectonucleotide pyrophosphatase/phosphodiesterase 4 (putative)

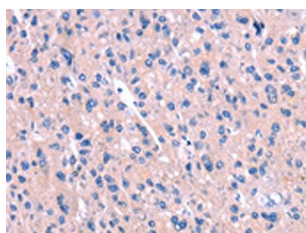
Immunogen:

Synthetic peptide of human ENPP4.

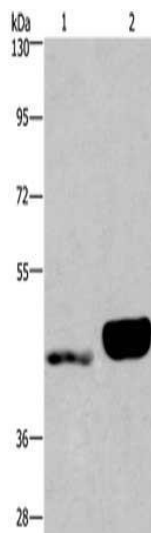
Storage:

-20° C, pH7.4 PBS, 0.05% NaN₃, 40% Glycerol

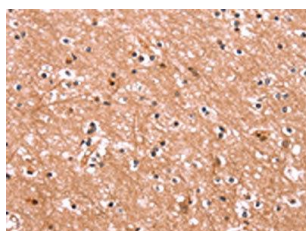
Product Images



The image on the left is immunohistochemistry of paraffin-embedded Human liver cancer tissue using PACO19603(ENPP4 Antibody) at dilution 1/15, on the right is treated with synthetic peptide. (Original magnification: x—200).



Gel: 6%SDS-PAGE, Lysate: 40 μ g, Lane 1-2: Human endometrial cancer tissue, Human placenta tissue, Primary antibody: PACO19603(ENPP4 Antibody) at dilution 1/200, Secondary antibody: Goat anti rabbit IgG at 1/8000 dilution, Exposure time: 40 seconds.



The image on the left is immunohistochemistry of paraffin-embedded Human brain tissue using PACO19603(ENPP4 Antibody) at dilution 1/15, on the right is treated with synthetic peptide. (Original magnification: x—200).