

PACO19636

Product Information

Size:

50ul

Reactivity:

Human, Mouse, Rat

Source:

Rabbit

Isotype:

IgG

Applications:

ELISA, IHC

Recommended dilutions:

ELISA:1:2000-1:5000, IHC:1:50-1:200

Protein Background:

Catalytic component of a P4-ATPase flippase complex which catalyzes the hydrolysis of ATP coupled to the transport of aminophospholipids from the outer to the inner leaflet of various membranes and ensures the maintenance of asymmetric distribution of phospholipids. Phospholipid translocation seems also to be implicated in vesicle formation and in uptake of lipid signaling molecules. May play a role in asymmetric distribution of phospholipids in the canicular membrane. May have a role in transport of bile acid, into the canaliculus, uptake of bile acid, from intestinal contents into intestinal mucosa or both. In cooperation with ABCB4 may be involved in establishing integrity of the canicular membrane thus protecting hepatocytes from bile salts. Together with TMEM30A is involved in uptake of the synthetic drug alkylphospholipid perifosine. Involved in the microvillus formation in polarized epithelial cells; the function seems to be independent from its flippase activity.

Gene ID:

GCG

Uniprot

P01275

Synonyms:

glucagon

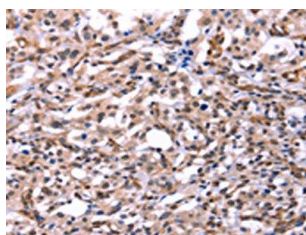
Immunogen:

Synthetic peptide of human GCG.

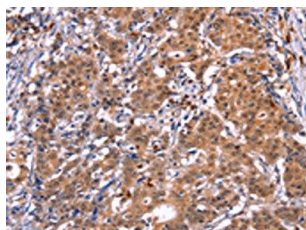
Storage:

-20°C; C, pH7.4 PBS, 0.05% NaN₃, 40% Glycerol

Product Images



The image on the left is immunohistochemistry of paraffin-embedded Human thyroid cancer tissue using PACO19636(GCG Antibody) at dilution 1/40, on the right is treated with synthetic peptide. (Original magnification: x—200).



The image on the left is immunohistochemistry of paraffin-embedded Human gastic cancer tissue using PACO19636(GCG Antibody) at dilution 1/40, on the right is treated with synthetic peptide. (Original magnification: x—200).