

Product Information

Size:

50ul

Reactivity:

Human, Mouse

Source:

Rabbit

Isotype:

IgG

Applications:

ELISA, WB

Recommended dilutions:

ELISA:1:1000-1:2000, WB:1:200-1:1000

Protein Background:

ATP- and membrane-binding protein that controls membrane reorganization/tubulation upon ATP hydrolysis. In vitro causes tubulation of endocytic membranes. Binding to phosphatidic acid, induces its membrane tubulation activity. Plays a role in endocytic transport. Involved in early endosome to recycling endosome compartment (ERC), retrograde early endosome to Golgi, and endosome to plasma membrane (rapid recycling) protein transport. Involved in the regulation of Golgi maintenance and morphology. Involved in the recycling of internalized D1 dopamine receptor. Plays a role in cardiac protein trafficking probably implicating ANK2. Involved in the ventricular membrane targeting of SLC8A1 and CACNA1C and probably the atrial membrane localization of CACNA1GG and CACNA1H implicated in the regulation of atrial myocyte excitability and cardiac conduction. In conjunction with EHD4 may be involved in endocytic trafficking of KDR/VEGFR2 implicated in control of glomerular function.

Gene ID:

HOXB4

Uniprot

P17483

Synonyms:

homeobox B4

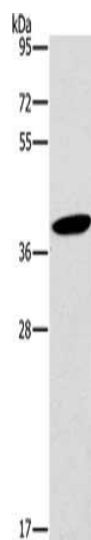
Immunogen:

Synthetic peptide of human HOXB4.

Storage:

-20° C, pH7.4 PBS, 0.05% NaN₃, 40% Glycerol

Product Images



Gel: 8%SDS-PAGE, Lysate: 40 μ g, Lane: RAW264.7 cells, Primary antibody: PACO19774(HOXB4 Antibody) at dilution 1/325, Secondary antibody: Goat anti rabbit IgG at 1/8000 dilution, Exposure time: 1 minute.