

Product Information

Size:

50ul

Reactivity:

Human, Mouse, Rat

Source:

Rabbit

Isotype:

IgG

Applications:

ELISA, WB, IHC

Recommended dilutions:

ELISA:1:1000-1:2000, WB:1:200-1:1000,
IHC:1:50-1:200

Protein Background:

Receptor tyrosine kinase which binds promiscuously transmembrane ephrin-B family ligands residing on adjacent cells, leading to contact-dependent bidirectional signaling into neighboring cells. The signaling pathway downstream of the receptor is referred to as forward signaling while the signaling pathway downstream of the ephrin ligand is referred to as reverse signaling. Functions in axon guidance during development. Involved in the guidance of commissural axons, that form a major interhemispheric connection between the 2 temporal lobes of the cerebral cortex. Also involved in guidance of contralateral inner ear efferent growth cones at the midline and of retinal ganglion cell axons to the optic disk. In addition to axon guidance, also regulates dendritic spines development and maturation and stimulates the formation of excitatory synapses. Upon activation by EFNB1, abolishes the ARHGEF15-mediated negative regulation on excitatory synapse formation.

Gene ID:

HSPE1

Uniprot

P61604

Synonyms:

heat shock 10kDa protein 1

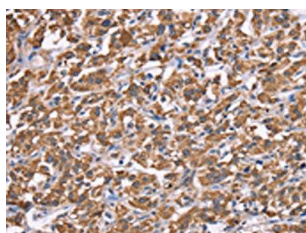
Immunogen:

Synthetic peptide of human HSPE1.

Storage:

-20° C, pH7.4 PBS, 0.05% NaN3, 40% Glycerol

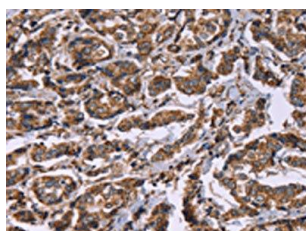
Product Images



The image on the left is immunohistochemistry of paraffin-embedded Human thyroid cancer tissue using PACO19798(HSPE1 Antibody) at dilution 1/40, on the right is treated with synthetic peptide. (Original magnification: x—200).



Gel: 10%SDS-PAGE, Lysate: 40 μ g, Lane: HepG2 cells, Primary antibody: PACO19798(HSPE1 Antibody) at dilution 1/750, Secondary antibody: Goat anti rabbit IgG at 1/8000 dilution, Exposure time: 5 minutes.



The image on the left is immunohistochemistry of paraffin-embedded Human breast cancer tissue using PACO19798(HSPE1 Antibody) at dilution 1/40, on the right is treated with synthetic peptide. (Original magnification: x—200).