

### Product Information

**Size:**

50ul

**Reactivity:**

Human, Mouse

**Source:**

Rabbit

**Isotype:**

IgG

**Applications:**

ELISA, IHC

**Recommended dilutions:**

ELISA:1:1000-1:2000, IHC:1:25-1:100

**Protein Background:**

Non-receptor protein-tyrosine kinase that plays an essential role in regulating cell migration, adhesion, spreading, reorganization of the actin cytoskeleton, formation and disassembly of focal adhesions and cell protrusions, cell cycle progression, cell proliferation and apoptosis. Required for early embryonic development and placenta development. Required for embryonic angiogenesis, normal cardiomyocyte migration and proliferation, and normal heart development. Regulates axon growth and neuronal cell migration, axon branching and synapse formation; required for normal development of the nervous system. Plays a role in osteogenesis and differentiation of osteoblasts. Functions in integrin signal transduction, but also in signaling downstream of numerous growth factor receptors, G-protein coupled receptors (GPCR), EPHA2, netrin receptors and LDL receptors.

**Gene ID:**

ARHGEF12

**Uniprot**

Q9NZN5

**Synonyms:**

Rho guanine nucleotide exchange factor (GEF) 12

**Immunogen:**

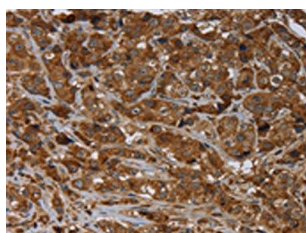
Synthetic peptide of human ARHGEF12.

**Storage:**

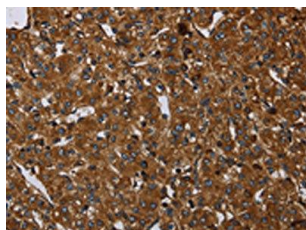
-20&deg; C, pH7.4 PBS, 0.05% NaN<sub>3</sub>, 40% Glycerol

## Product Images

---



The image on the left is immunohistochemistry of paraffin-embedded Human breast cancer tissue using PACO19922(ARHGEF12 Antibody) at dilution 1/20, on the right is treated with synthetic peptide. (Original magnification: x—200).



The image on the left is immunohistochemistry of paraffin-embedded Human prostate cancer tissue using PACO19922(ARHGEF12 Antibody) at dilution 1/20, on the right is treated with synthetic peptide. (Original magnification: x—200).