

### Product Information

**Size:**

50ul

**Reactivity:**

Human, Mouse, Rat

**Source:**

Rabbit

**Isotype:**

IgG

**Applications:**

ELISA, IHC

**Recommended dilutions:**

ELISA:1:2000-1:5000, IHC:1:25-1:100

**Protein Background:**

Microtubule motor protein that binds to microtubules with high affinity through each tubulin heterodimer and has an ATPase activity. Plays a role in many processes like cell division, cytokinesis and also in cell proliferation and apoptosis. During cytokinesis, targets to central spindle and midbody through its interaction with PRC1 and CIT respectively. Regulates cell growth through regulation of cell cycle progression and cytokinesis. During cell cycle progression acts through SCF-dependent proteasomal ubiquitin-dependent protein catabolic process which controls CDKN1B degradation, resulting in positive regulation of cyclins, including CCNE1, CCND1 and CCNB1. During late neurogenesis, regulates the cerebellar, cerebral cortex and olfactory bulb development through regulation of apoptosis, cell proliferation and cell division. Also is required for chromosome congression and alignment during mitotic cell cycle process.

**Gene ID:**

LOXL2

**Uniprot**

Q9Y4K0

**Synonyms:**

lysyl oxidase-like 2

**Immunogen:**

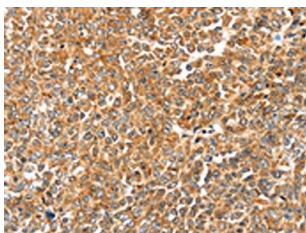
Synthetic peptide of human LOXL2.

**Storage:**

-20&deg; C, pH7.4 PBS, 0.05% NaN<sub>3</sub>, 40% Glycerol

## Product Images

---



The image on the left is immunohistochemistry of paraffin-embedded Human ovarian cancer tissue using PACO19952(LOXL2 Antibody) at dilution 1/25, on the right is treated with synthetic peptide. (Original magnification: x—200).