

Product Information

Size:

50ul

Reactivity:

Human, Mouse

Source:

Rabbit

Isotype:

IgG

Applications:

ELISA, IHC

Recommended dilutions:

ELISA:1:2000-1:5000, IHC:1:25-1:100

Protein Background:

Microtubule motor protein that binds to microtubules with high affinity through each tubulin heterodimer and has an ATPase activity. Plays a role in many processes like cell division, cytokinesis and also in cell proliferation and apoptosis. During cytokinesis, targets to central spindle and midbody through its interaction with PRC1 and CIT respectively. Regulates cell growth through regulation of cell cycle progression and cytokinesis. During cell cycle progression acts through SCF-dependent proteasomal ubiquitin-dependent protein catabolic process which controls CDKN1B degradation, resulting in positive regulation of cyclins, including CCNE1, CCND1 and CCNB1. During late neurogenesis, regulates the cerebellar, cerebral cortex and olfactory bulb development through regulation of apoptosis, cell proliferation and cell division. Also is required for chromosome congression and alignment during mitotic cell cycle process.

Gene ID:

LOXL3

Uniprot

P58215

Synonyms:

lysyl oxidase-like 3

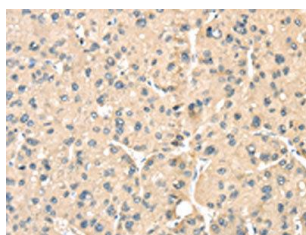
Immunogen:

Synthetic peptide of human LOXL3.

Storage:

-20° C, pH7.4 PBS, 0.05% NaN₃, 40% Glycerol

Product Images



The image on the left is immunohistochemistry of paraffin-embedded Human liver cancer tissue using PACO19954(LOXL3 Antibody) at dilution 1/35, on the right is treated with synthetic peptide. (Original magnification: x—200).