

# MAGEE1 Antibody



PACO19977

---

## Product Information

**Size:**

50ul

**Reactivity:**

Human

**Source:**

Rabbit

**Isotype:**

IgG

**Applications:**

ELISA, IHC

**Recommended dilutions:**

ELISA:1:1000-1:2000, IHC:1:25-1:100

**Protein Background:**

Substrate recognition component of a SCF (SKP1-CUL1-F-box protein) E3 ubiquitin-protein ligase complex which mediates the ubiquitination and subsequent proteasomal degradation of target proteins. Recognizes and binds to phosphorylated target proteins. SCF(BTRC) mediates the ubiquitination of CTNNB1 and participates in Wnt signaling. SCF(BTRC) mediates the ubiquitination of NFKBIA, NFKBIB and NFKBIE; the degradation frees the associated NFKB1 to translocate into the nucleus and to activate transcription. Ubiquitination of NFKBIA occurs at 'Lys-21' and 'Lys-22'. SCF(BTRC) mediates the ubiquitination of CEP68; this is required for centriole separation during mitosis. SCF(BTRC) mediates the ubiquitination of phosphorylated NFKB1/nuclear factor NF-kappa-B p105 subunit, ATF4, CDC25A, DLG1, FBXO5, PER1, SMAD3, SMAD4, SNAI1 and probably NFKB2. Has an essential role in the control of the clock-dependent transcription via degradation of phosphorylated PER1 and PER2.

**Gene ID:**

MAGEE1

**Uniprot**

Q9HCI5

**Synonyms:**

melanoma antigen family E, 1

**Immunogen:**

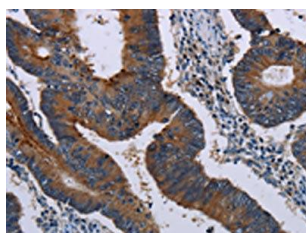
Synthetic peptide of human MAGEE1.

**Storage:**

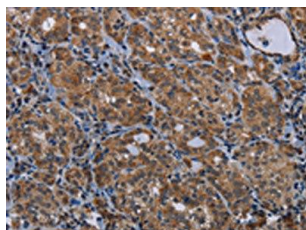
-20&deg; C, pH7.4 PBS, 0.05% NaN3, 40% Glycerol

## Product Images

---



The image on the left is immunohistochemistry of paraffin-embedded Human colon cancer tissue using PACO19977(MAGEE1 Antibody) at dilution 1/30, on the right is treated with synthetic peptide. (Original magnification: x—200).



The image on the left is immunohistochemistry of paraffin-embedded Human thyroid cancer tissue using PACO19977(MAGEE1 Antibody) at dilution 1/30, on the right is treated with synthetic peptide. (Original magnification: x—200).