

Product Information

Size:

50ul

Reactivity:

Human

Source:

Rabbit

Isotype:

IgG

Applications:

ELISA, IHC

Recommended dilutions:

ELISA:1:1000-1:2000, IHC:1:25-1:100

Protein Background:

Transcription factor playing important roles in primary neurulation and in the differentiation of stratified epithelia of both ectodermal and endodermal origin. Binds directly to the consensus DNA sequence 5'-AACCGGTT-3' acting as an activator and repressor on distinct target genes. Exhibits functional redundancy with GRHL2 in epidermal morphogenetic events and epidermal wound repair. Exhibits functional redundancy with GRHL2 in epidermal morphogenetic events and epidermal wound repair but is essential to form the epidermal barrier with TGM3 as critical direct target gene among others. Despite being dispensable during normal epidermal homeostasis in the adulthood, is again required for barrier repair after immune-mediated epidermal damage, regulates distinct gene batteries in embryonic epidermal differentiation and adult epidermal barrier reformation after injury. Plays unique and cooperative roles with GRHL2 in establishing distinct zones of primary neurulation.

Gene ID:

MRGPRX1

Uniprot

Q96LB2

Synonyms:

MAS-related GPR, member X1

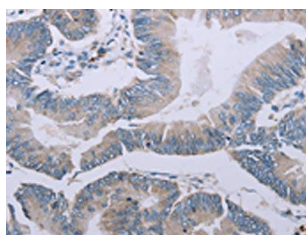
Immunogen:

Synthetic peptide of human MRGPRX1.

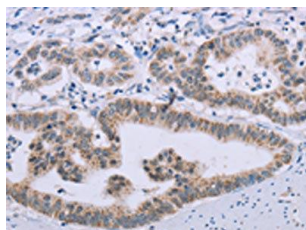
Storage:

-20°C; C, pH7.4 PBS, 0.05% NaN₃, 40% Glycerol

Product Images



The image on the left is immunohistochemistry of paraffin-embedded Human colon cancer tissue using PACO20038(MRGPRX1 Antibody) at dilution 1/20, on the right is treated with synthetic peptide. (Original magnification: x—200).



The image on the left is immunohistochemistry of paraffin-embedded Human gastic cancer tissue using PACO20038(MRGPRX1 Antibody) at dilution 1/20, on the right is treated with synthetic peptide. (Original magnification: x—200).