

## Product Information

**Size:**

50ul

**Reactivity:**

Human

**Source:**

Rabbit

**Isotype:**

IgG

**Applications:**

ELISA, IHC

**Recommended dilutions:**

ELISA:1:1000-1:2000, IHC:1:25-1:100

**Protein Background:**

Transcriptional regulator which regulates the development, differentiation, and function of thymic epithelial cells (TECs) both in the prenatal and postnatal thymus. Acts as a master regulator of the TECs lineage development and is required from the onset of differentiation in progenitor TECs in the developing fetus to the final differentiation steps through which TECs mature to acquire their full functionality. Regulates, either directly or indirectly the expression of a variety of genes that mediate diverse aspects of thymus development and function, including MHC Class II, DLL4, CCL25, CTSL, CD40 and PAX1. Regulates the differentiation of the immature TECs into functional cortical TECs (cTECs) and medullary TECs (mTECs). Essential for maintenance of mTECs population in the postnatal thymus. Involved in the morphogenesis and maintenance of the three-dimensional thymic microstructure which is necessary for a fully functional thymus.

**Gene ID:**

MYO18B

**Uniprot**

Q8IUG5

**Synonyms:**

myosin XVIIIIB

**Immunogen:**

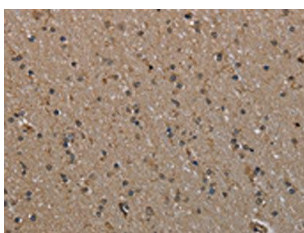
Synthetic peptide of human MYO18B.

**Storage:**

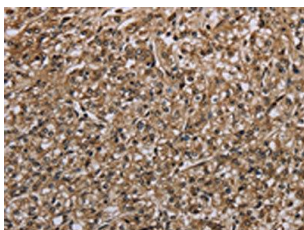
-20&deg; C, pH7.4 PBS, 0.05% NaN<sub>3</sub>, 40% Glycerol

## Product Images

---



The image on the left is immunohistochemistry of paraffin-embedded Human brain tissue using PACO20058(MYO18B Antibody) at dilution 1/20, on the right is treated with synthetic peptide. (Original magnification: x—200).



The image on the left is immunohistochemistry of paraffin-embedded Human prostate cancer tissue using PACO20058(MYO18B Antibody) at dilution 1/20, on the right is treated with synthetic peptide. (Original magnification: x—200).