

PACO20096

Product Information

Size:

50ul

Reactivity:

Human, Mouse, Rat

Source:

Rabbit

Isotype:

IgG

Applications:

ELISA, WB, IHC

Recommended dilutions:

ELISA:1:2000-1:5000, WB:1:500-1:2000,
IHC:1:50-1:200

Protein Background:

Multifunctional adapter protein involved in diverse array of functions including trafficking of transmembrane proteins, neuro and immunomodulation, exosome biogenesis, and tumorigenesis. Positively regulates TGF β 1-mediated SMAD2/3 activation and TGF β 1-induced epithelial-to-mesenchymal transition (EMT) and cell migration in various cell types. May increase TGF β 1 signaling by enhancing cell-surface expression of TGF β 1 by preventing the interaction between TGF β 1 and CAV1 and subsequent CAV1-dependent internalization and degradation of TGF β 1. In concert with SDC1/4 and PDCD6IP, regulates exosome biogenesis. Regulates migration, growth, proliferation, and cell cycle progression in a variety of cancer types. In adherens junctions may function to couple syndecans to cytoskeletal proteins or signaling components. Seems to couple transcription factor SOX4 to the IL-5 receptor (IL5RA). May also play a role in vesicular trafficking. Seems to be required for the targeting of TGFA to the cell surface in the early secretory pathway.

Gene ID:

RHEB

Uniprot

Q15382

Synonyms:

Ras homolog enriched in brain

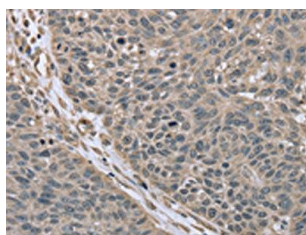
Immunogen:

Synthetic peptide of human RHEB.

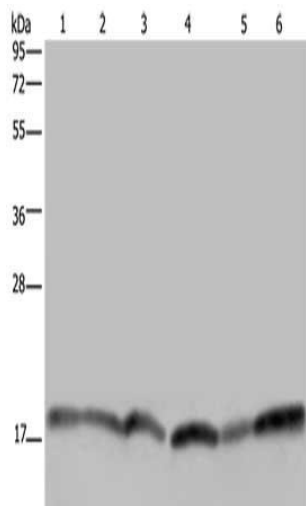
Storage:

-20 $\text{\textcircled{C}}$; C, pH7.4 PBS, 0.05% NaN₃, 40% Glycerol

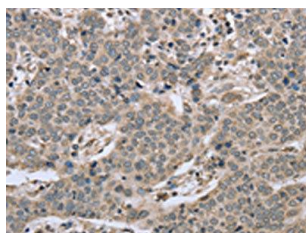
Product Images



The image on the left is immunohistochemistry of paraffin-embedded Human lung cancer tissue using PACO20096(RHEB Antibody) at dilution 1/40, on the right is treated with synthetic peptide. (Original magnification: x—200).



Gel: 10%SDS-PAGE, Lysate: 40 ug, Lane 1-6: Human brain malignant glioma tissue, Jurkat cells, Raji cells, 231 cells, human fetal brain tissue, Hela cells, Primary antibody: PACO20096(RHEB Antibody) at dilution 1/300, Secondary antibody: Goat anti rabbit IgG at 1/8000 dilution, Exposure time: 5 seconds.



The image on the left is immunohistochemistry of paraffin-embedded Human liver cancer tissue using PACO20096(RHEB Antibody) at dilution 1/40, on the right is treated with synthetic peptide. (Original magnification: x—200).