

Product Information

Size:

50ul

Reactivity:

Human

Source:

Rabbit

Isotype:

IgG

Applications:

ELISA, IHC

Recommended dilutions:

ELISA:1:1000-1:2000, IHC:1:25-1:100

Protein Background:

Plays a role as a modulator of TGF-beta-signaling by restricting substrate specificity of RNF111. Involved in autophagy. Regulates early events but also late events of autophagosome formation through direct interaction with Atg16L1. Required for the formation of the autophagosome-like double-membrane structure that surrounds the Salmonella-containing vacuole (SCV) during *S. typhimurium* infection and subsequent xenophagy. Autophagy positively regulates repair of DNA damage induced by ionizing radiation and negatively regulates apoptosis. Plays an indispensable role in fetal hematopoiesis and in the regulation of neuronal homeostasis. Implicated in the regulation of RB1 expression. Functions as a DNA-binding transcription factor. Is a potent regulator of the RB1 pathway and a mediator that plays a crucial role in muscular differentiation. Expression is, thus, a prerequisite for myogenic differentiation. Inhibits PTK2/FAK1 and PTK2B/PYK2 activity and activation of downstream signaling pathways.

Gene ID:

PAGE4

Uniprot

O60829

Synonyms:

P antigen family, member 4

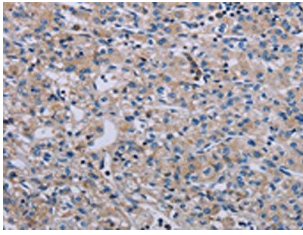
Immunogen:

Synthetic peptide of human PAGE4.

Storage:

-20°C; C, pH7.4 PBS, 0.05% NaN3, 40% Glycerol

Product Images



The image on the left is immunohistochemistry of paraffin-embedded Human prostate cancer tissue using PACO20168(PAGE4 Antibody) at dilution 1/40, on the right is treated with synthetic peptide. (Original magnification: x—200).