

PACO20240

Product Information

Size:

50ul

Reactivity:

Human, Mouse, Rat

Source:

Rabbit

Isotype:

IgG

Applications:

ELISA, WB, IHC

Recommended dilutions:

ELISA:1:1000-1:2000, WB:1:200-1:1000,
IHC:1:50-1:200

Protein Background:

Transcriptional repressor. Binds specifically to the DNA sequence 5'-GACTNGACT-3'. Has tumor suppressor activity. May play a role in control of cell proliferation and/or neural cell development. Regulates proliferation of early T progenitor cells by maintaining expression of HES1. Also plays a role in antero-posterior specification of the axial skeleton and negative regulation of the self-renewal activity of hematopoietic stem cells. Component of a Polycomb group (PcG) multiprotein PRC1-like complex, a complex class required to maintain the transcriptionally repressive state of many genes, including Hox genes, throughout development. PcG PRC1 complex acts via chromatin remodeling and modification of histones; it mediates monoubiquitination of histone H2A 'Lys-119', rendering chromatin heritably changed in its expressibility. Is not functionally redundant with BMI1; unlike BMI1 does not stimulate the E3 ubiquitin-protein ligase activity in a reconstituted PRC1-like complex.

Gene ID:

PLCB3

Uniprot

Q01970

Synonyms:

phospholipase C, beta 3

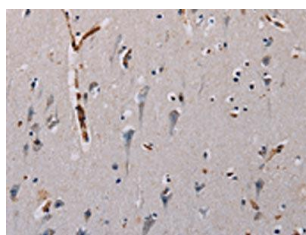
Immunogen:

Synthetic peptide of human PLCB3.

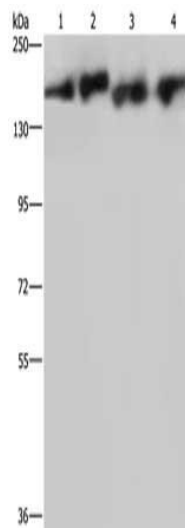
Storage:

-20° C, pH7.4 PBS, 0.05% NaN₃, 40% Glycerol

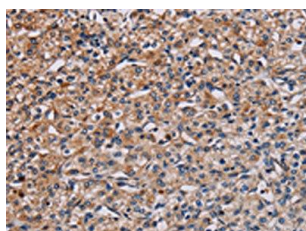
Product Images



The image on the left is immunohistochemistry of paraffin-embedded Human brain tissue using PACO20240(PLCB3 Antibody) at dilution 1/40, on the right is treated with synthetic peptide. (Original magnification: x—200).



Gel: 6%SDS-PAGE, Lysate: 40 ug, Lane 1-4: PC3 cells, A431 cells, mouse lung tissue, Hela cells, Primary antibody: PACO20240(PLCB3 Antibody) at dilution 1/200, Secondary antibody: Goat anti rabbit IgG at 1/8000 dilution, Exposure time: 3 minutes.



The image on the left is immunohistochemistry of paraffin-embedded Human prostate cancer tissue using PACO20240(PLCB3 Antibody) at dilution 1/40, on the right is treated with synthetic peptide. (Original magnification: x—200).