

Product Information

Size:

50ul

Reactivity:

Human

Source:

Rabbit

Isotype:

IgG

Applications:

ELISA, WB, IHC

Recommended dilutions:

ELISA:1:2000-1:5000, WB:1:500-1:2000,
IHC:1:50-1:300

Protein Background:

Transcriptional repressor which coordinates circadian rhythm and metabolic pathways in a heme-dependent manner. Integral component of the complex transcription machinery that governs circadian rhythmicity and forms a critical negative limb of the circadian clock by directly repressing the expression of core clock components ARNTL/BMAL1 and CLOCK. Also regulates genes involved in metabolic functions, including lipid metabolism and the inflammatory response. Acts as a receptor for heme which stimulates its interaction with the NCOR1/HDAC3 corepressor complex, enhancing transcriptional repression. Recognizes two classes of DNA response elements within the promoter of its target genes and can bind to DNA as either monomers or homodimers, depending on the nature of the response element. Binds as a monomer to a response element composed of the consensus half-site motif 5'-[A/G]GGTCA-3' preceded by an A/T-rich 5' sequence (RevRE), or as a homodimer to a direct repeat of the core motif spaced by two nucleotides (RevDR-2).

Gene ID:

PTPN20

Uniprot

Q4JDL3

Synonyms:

protein tyrosine phosphatase, non-receptor type 20B

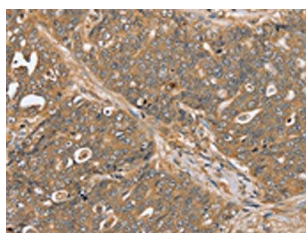
Immunogen:

Synthetic peptide of human PTPN20B.

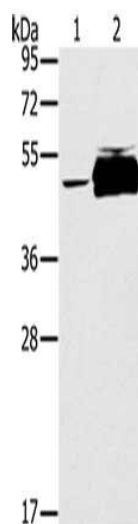
Storage:

-20° C, pH7.4 PBS, 0.05% NaN₃, 40% Glycerol

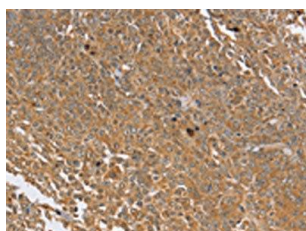
Product Images



The image on the left is immunohistochemistry of paraffin-embedded Human ovarian cancer tissue using PACO20293(PTPN20B Antibody) at dilution 1/30, on the right is treated with synthetic peptide. (Original magnification: x—200).



Gel: 8%SDS-PAGE, Lysate: 40 ug, Lane 1-2: K562 cells, human testis tissue, Primary antibody: PACO20293(PTPN20B Antibody) at dilution 1/200, Secondary antibody: Goat anti rabbit IgG at 1/8000 dilution, Exposure time: 1 minute.



The image on the left is immunohistochemistry of paraffin-embedded Human cervical cancer tissue using PACO20293(PTPN20B Antibody) at dilution 1/30, on the right is treated with synthetic peptide. (Original magnification: x—200).