

Product Information

Size:

50ul

Reactivity:

Human, Mouse

Source:

Rabbit

Isotype:

IgG

Applications:

ELISA, IHC

Recommended dilutions:

ELISA:1:2000-1:5000, IHC:1:25-1:100

Protein Background:

Acts as an electrogenic sodium (Na⁺) and chloride (Cl⁻)-dependent sodium-coupled solute transporter, including transport of monocarboxylates (short-chain fatty acid, including L-lactate, D-lactate, pyruvate, acetate, propionate, valerate and butyrate), lactate, monocarboxylate drugs (nicotinate, benzoate, salicylate and 5-aminosalicylate) and ketone bodies (beta-D-hydroxybutyrate, acetoacetate and alpha-ketoisocaproate), with a Na⁺: substrate stoichiometry of between 4:1 and 2:1. Catalyzes passive carrier mediated diffusion of iodide. Mediates iodide transport from the thyrocyte into the colloid lumen through the apical membrane. May be responsible for the absorption of D-lactate and monocarboxylate drugs from the intestinal tract. Acts as a tumor suppressor, suppressing colony formation in colon cancer, prostate cancer and glioma cell lines.

Gene ID:

TRIM45

Uniprot

Q9H8W5

Synonyms:

tripartite motif containing 45

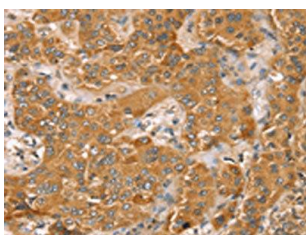
Immunogen:

Synthetic peptide of human TRIM45.

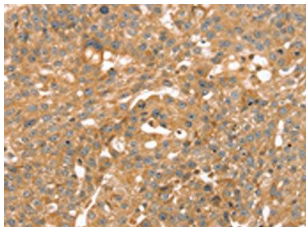
Storage:

-20° C, pH7.4 PBS, 0.05% NaN₃, 40% Glycerol

Product Images



The image on the left is immunohistochemistry of paraffin-embedded Human liver cancer tissue using PACO20700 (TRIM45 Antibody) at dilution 1/45, on the right is treated with synthetic peptide. (Original magnification: x—200).



The image on the left is immunohistochemistry of paraffin-embedded Human breast cancer tissue using PACO20700 (TRIM45 Antibody) at dilution 1/45, on the right is treated with synthetic peptide. (Original magnification: x—200).