

## Product Information

**Size:**

50ul

**Reactivity:**

Human, Mouse

**Source:**

Rabbit

**Isotype:**

IgG

**Applications:**

ELISA, IHC

**Recommended dilutions:**

ELISA:1:2000-1:5000, IHC:1:20-1:100

**Protein Background:**

Plasma glycoprotein that binds a number of ligands such as heme, heparin, heparan sulfate, thrombospondin, plasminogen, and divalent metal ions. Binds heparin and heparin/glycosaminoglycans in a zinc-dependent manner. Binds heparan sulfate on the surface of liver, lung, kidney and heart endothelial cells. Binds to N-sulfated polysaccharide chains on the surface of liver endothelial cells. Inhibits rosette formation. Acts as an adapter protein and is implicated in regulating many processes such as immune complex and pathogen clearance, cell chemotaxis, cell adhesion, angiogenesis, coagulation and fibrinolysis. Mediates clearance of necrotic cells through enhancing the phagocytosis of necrotic cells in a heparan sulfate-dependent pathway. This process can be regulated by the presence of certain HRG ligands such as heparin and zinc ions. Binds to IgG subclasses of immunoglobins containing  $\kappa$  and  $\lambda$  light chains with different affinities regulating their clearance and inhibiting the formation of insoluble immune complexes.

**Gene ID:**

NSD1

**Uniprot**

Q96L73

**Synonyms:**

nuclear receptor binding SET domain protein 1

**Immunogen:**

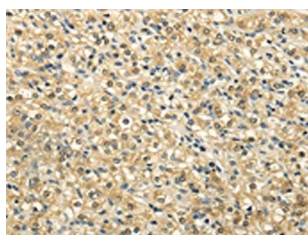
Synthetic peptide of human NSD1.

**Storage:**

-20°C; C, pH7.4 PBS, 0.05% NaN<sub>3</sub>, 40% Glycerol

## Product Images

---



The image on the left is immunohistochemistry of paraffin-embedded Human prostate cancer tissue using PACO20829(NSD1 Antibody) at dilution 1/25, on the right is treated with synthetic peptide. (Original magnification: x—200)The image on the left is immunohistochemistry of paraffin-embedded Human lung cancer tissue using PACO20829(NSD1 Antibody) at dilution 1/25, on the right is treated with synthetic peptide. (Original magnification: x—200).