

Product Information

Size:

50ul

Reactivity:

Human

Source:

Rabbit

Isotype:

IgG

Applications:

ELISA, WB, IHC

Recommended dilutions:

ELISA:1:2000-1:5000, WB:1:500-1:2000,
IHC:1:25-1:100

Protein Background:

Cell surface protein involved in the host-parasite interaction during candidal infection. With MP65, represents a major component of the biofilm matrix. Sequesters zinc from host tissue and mediates leukocyte adhesion and migration. As a surface protein, binds the two human complement regulators CFH and CFHR1, as well as plasminogen PLG, mediates complement evasion and extra-cellular matrix interaction and/or degradation. As a released protein, enhances complement control in direct vicinity of the yeast and thus generates an additional protective layer which controls host complement attack, assisting the fungus in escaping host surveillance. Binds to host fluid-phase C3 and blocks cleavage of C3 to C3a and C3b, leading to inhibition of complement activation. Mediates also human complement control and complement evasion through binding to C4BPA, another human complement inhibitor, as well as through binding to host integrin alpha-M/beta-2. Decreases complement-mediated adhesion, as well as uptake of *C. albicans* by human macrophages.

Gene ID:

UTS2B

Uniprot

Q76510

Synonyms:

urotensin 2B

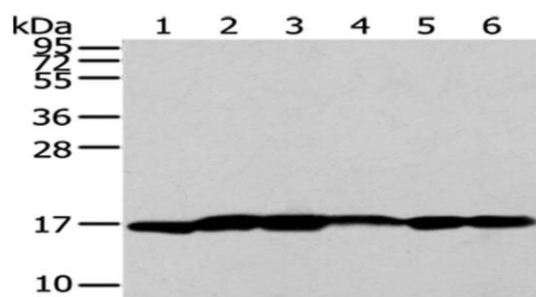
Immunogen:

Synthetic peptide of human UTS2B.

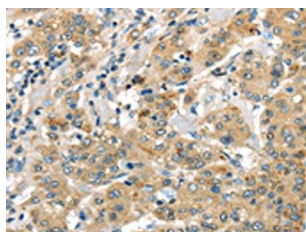
Storage:

-20° C, pH7.4 PBS, 0.05% NaN3, 40% Glycerol

Product Images



Gel: 12%SDS-PAGE, Lysate: 40 ug, Lane 1-6: A431 cells, Human liver cancer tissue, Lovo cells, PC3 cells, Human placenta tissue, 293T cells, Primary antibody: PACO20844(UTS2B Antibody) at dilution 1/200 dilution, Secondary antibody: Goat anti rabbit IgG at 1/8000 dilution, Exposure time: 30 seconds.



The image on the left is immunohistochemistry of paraffin-embedded Human liver cancer tissue using PACO20844(UTS2B Antibody) at dilution 1/35, on the right is treated with synthetic peptide. (Original magnification: x—200).