

## Product Information

**Size:**

50ul

**Reactivity:**

Human, Mouse, Rat

**Source:**

Rabbit

**Isotype:**

IgG

**Applications:**

ELISA, IHC

**Recommended dilutions:**

ELISA:1:2000-1:5000, IHC:1:25-1:100

**Protein Background:**

Non-heme iron-containing dioxygenase that catalyzes the stereo-specific peroxidation of free and esterified polyunsaturated fatty acid, generating a spectrum of bioactive lipid mediators. Converts arachidonic acid, into 12-hydroperoxyeicosatetraenoic acid, 12-HPETE and 15-hydroperoxyeicosatetraenoic acid, 15-HPETE. Also converts linoleic acid, to 13-hydroperoxyoctadecadienoic acid, May also act on (12S)-hydroperoxyeicosatetraenoic acid, (12S)-HPETE to produce hepxilin A3. Probably plays an important role in the immune and inflammatory responses. Through the oxygenation of membrane-bound phosphatidylethanolamine in macrophages may favor clearance of apoptotic cells during inflammation by resident macrophages and prevent an autoimmune response associated with the clearance of apoptotic cells by inflammatory monocytes. In parallel, may regulate actin polymerization which is crucial for several biological processes, including macrophage function.

**Gene ID:**

WISP1

**Uniprot**

O95388

**Synonyms:**

WNT1 inducible signaling pathway protein 1

**Immunogen:**

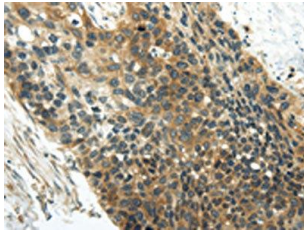
Synthetic peptide of human WISP1.

**Storage:**

-20&deg; C, pH7.4 PBS, 0.05% NaN<sub>3</sub>, 40% Glycerol

## Product Images

---



The image on the left is immunohistochemistry of paraffin-embedded Human esophagus cancer tissue using PACO20882(WISP1 Antibody) at dilution 1/25, on the right is treated with synthetic peptide. (Original magnification: x—200).