

Product Information

Size:

50ul

Reactivity:

Human, Mouse

Source:

Rabbit

Isotype:

IgG

Applications:

ELISA, WB, IHC

Recommended dilutions:

ELISA:1:2000-1:5000, WB:1:500-1:2000,
IHC:1:25-1:100

Protein Background:

Secreted effector that interferes with the host cell ubiquitin pathway and is required for intracellular bacterial replication. Catalyzes the ubiquitination of several mammalian Rab proteins (Rab33b, Rab1, Rab6a and Rab30) during *L. pneumophila* infection, without engaging the standard cellular enzyme cascade (E1 and E2). Transfers an ADP-ribose moiety from NAD to the 'Arg-42' residue of ubiquitin in a reaction that releases nicotinamide. The modified ubiquitin is subsequently transferred to the substrate protein through an unknown mechanism that results in the release of AMP. Cannot ubiquitinate the endosomal Rab5 or the cytoskeletal small GTPase Rac1. Also acts as a deubiquitinase (DUB), catalyzing the cleavage of three of the most abundant polyubiquitin chains ('Lys-11', 'Lys-48' and 'Lys-63') with a distinct preference for 'Lys-63' linkages; is thus able to efficiently remove 'Lys-63'-linked polyubiquitin chains from the phagosomal surface. Is also able to remove NEDD8 from neddylated proteins, but is unable to recognize SUMO.

Gene ID:

ZPR1

Uniprot

O75312

Synonyms:

ZPR1 zinc finger

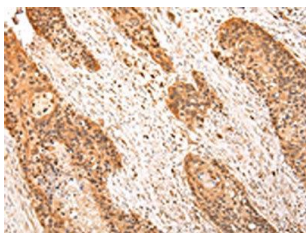
Immunogen:

Synthetic peptide of human ZPR1.

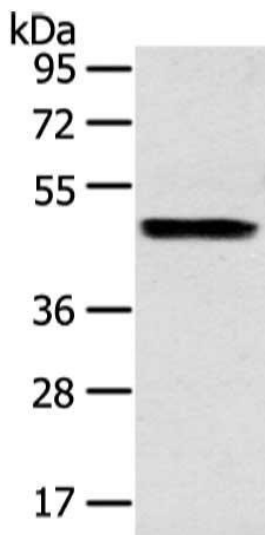
Storage:

-20° C, pH7.4 PBS, 0.05% NaN3, 40% Glycerol

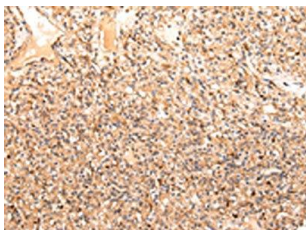
Product Images



The image on the left is immunohistochemistry of paraffin-embedded Human esophagus cancer tissue using PACO20954(ZPR1 Antibody) at dilution 1/20, on the right is treated with synthetic peptide. (Original magnification: x—200).



Gel: 8%SDS-PAGE, Lysate: 40 ug, Lane: Human liver cancer tissue, Primary antibody: PACO20954(ZPR1 Antibody) at dilution 1/200 dilution, Secondary antibody: Goat anti rabbit IgG at 1/8000 dilution, Exposure time: 15 seconds.



The image on the left is immunohistochemistry of paraffin-embedded Human prostate cancer tissue using PACO20954(ZPR1 Antibody) at dilution 1/20, on the right is treated with synthetic peptide. (Original magnification: x—200).